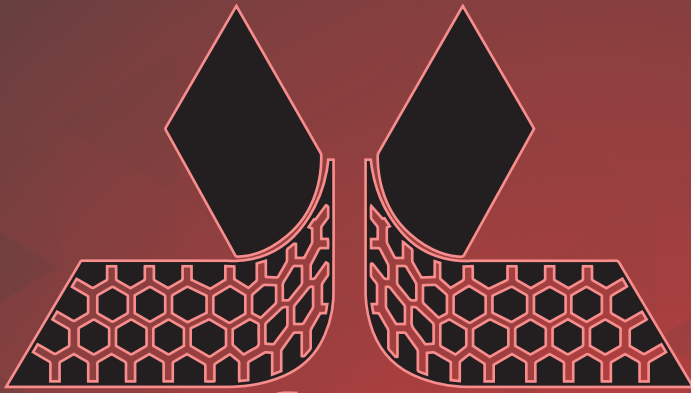


SEPTEMBER 2023



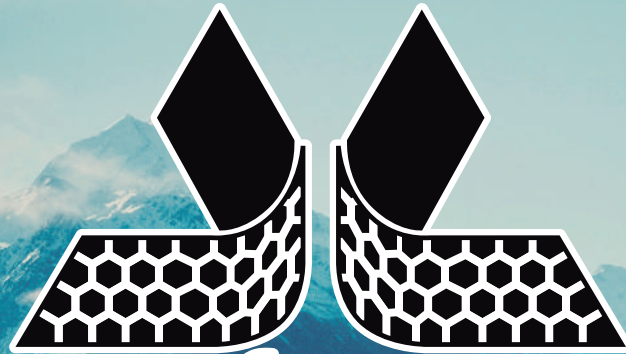
H.B. *plus* BANDAMATIC  
RETREAD RUBBER

# NORTH AMERICA

## RETREAD PRODUCTS GUIDE

RETREAD RUBBER | CUSHION GUM | ENVELOPES | CURING TUBES | CHEMICALS | REPAIR MATERIALS  
[ORDERS@HBPLUSBANDAMATIC.COM](mailto:ORDERS@HBPLUSBANDAMATIC.COM) | [WWW.HBPLUS.US](http://WWW.HBPLUS.US)





**H.B. plus BANDAMATIC**

**RETREAD RUBBER**

MISSING SOMETHING? VIEW OUR GLOBAL CATALOG BY VISITING

[WWW.HBPLUS.US](http://WWW.HBPLUS.US)

OR SCANNING THE QR BELOW



TECHNOLOGY ROLLING AROUND THE WORLD.  
TECNOLOGÍA QUE RUEDA POR EL MUNDO.

TECHNOLOGY ROLLING AROUND THE WORLD.  
TECNOLOGÍA QUE RUEDA POR EL MUNDO.



Presence in more than **50** countries.  
Presencia en más de **50** países.

2023



We export to more than 50 countries in North America, Central America, South America, Europe the Caribbean.  
Exportamos a más de 50 países en América del Norte, América Central, América del Sur, Europa y el Caribe

Distribución en :

México  
Estados Unidos ( Los Ángeles,  
Houston, Texas)  
Europa ( Amberes Bélgica ).

Distribution :

México  
Estados Unidos ( Los Ángeles,  
Houston, Texas)  
Europa, ( Amberes Bélgica ).

# H. B. PLUS BANDAMATIC

We are a team of people committed to our work, where each product is carefully engineered to exceed the expectations of our customers.

Start saving immediately, contact us and an advisor will provide all the information required to select the kind of tread that best suits your needs.

Join the hundreds of customers in over 50 countries that reward us with their preference.

Be part of H.B. plus BANDAMATIC,  
Technology Rolling over the world

Somos un equipo comprometido con nuestro trabajo, donde cada producto es cuidadosamente fabricado para superar las expectativas de todos nuestros clientes.

Empiece a ahorrar de inmediato, contáctanos y un asesor le brindará toda la información que se requiera para seleccionar el tipo de banda que más se adecúe a sus necesidades.

Forme parte de los cientos de clientes que en más de 50 países nos premian con su preferencia.  
Sea parte de H.B. plus BANDAMATIC  
Tecnología que rueda por el mundo.

**NEW!**

**DT**



- Open shoulder tread design provides excellent traction in wet and dry environments
- Lug angle provides sustained traction throughout the life of the tread
- Improved compound with better cut and tear resistance in regional and light truck applications



**REGIONAL**



FOR DRIVE AXLE APPLICATION

CODE	SIZE	WIDTH		DEPTH	
		MM	INCHES	MM	INCHES
70DT22	6	180	7	17	22/32
74DT22	6.5	190	7 1/2	17	22/32
80DT24	8	203	8	19	24/32
85DT24	9	219	8 5/8	19	24/32
90DT24	10	229	9	19	24/32



FIND MORE PRODUCTS AND INFORMATION  
BY SCANNING THE QR CODE  
OR VISITING [WWW.HBPLUS.US](http://WWW.HBPLUS.US)



**PRECURED**  
**TREAD DESIGNS**

# SIMBOLOGY



SNOW / NIEVE



RAIN  
LLUVIA



LONG HAUL  
RECORRIDO LARGO



OFF ROAD  
FUERA DE  
CARRETERA



REGIONAL  
REGIONAL



SEVERO-  
SEVERE



ON / OFF ROAD  
MIXTO



METRO CITY  
URBANO



INDUSTRIAL  
INDUSTRIAL



ON / OFF ROAD  
MAXIMUM 60 KM / hr  
MIXTO 60 KM MÁXIMA



FREE AXLE APPLICATION  
EJES LIBRES



ALL-POSITION  
TODA POSICIÓN



TRACTION AXLE APPLICATION  
EJES DE TRACCIÓN



SINGLE TIRE  
SINGLE TIRE



LONG HAUL  
LARGO RECORRIDO



SINGLE TIRE  
SINGLE TIRE



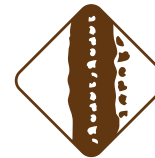
REGIONAL  
REGIONAL



URBANO  
URBANO



ON / OFF ROAD  
MIXTO



OFF ROAD  
FUERA DE CARRETERA



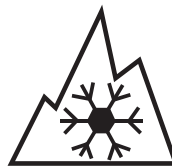
INDUSTRIAL  
INDUSTRIAL



BANDA PARA ARRASTE  
LATERAL SHEARRING  
RESISTANT



FUEL SAVER  
AHORRO COMBUSTIBLE



3PMSF



# LONG HAUL

## RETREAD DESIGNS

---

RETREAD RUBBER | CUSHION GUM | ENVELOPES | CURING TUBES | CHEMICALS | REPAIR MATERIALS  
ORDERS@HBPLUSBANDAMATIC.COM | WWW.HBPLUS.US







HS		EJES LIBRES FREE AXLE			
CODE	SIZE MEDIDA	mm		inch	
		mm	inch	mm	inch
70 HS 11	6	178	7	8.70	11/32
73 HS 11	6.5	187	7 3/8	8.70	11/32
75 HS 11	7	194	7 5/8	8.70	11/32
80 HS 11	8	203	8	8.70	11/32
85 HS 11	9	219	8 5/8	8.70	11/32

RADIAL / RADIAL DIAGONAL / BIAS PLY



BCH		EJES LIBRES FREE AXLE			
CODE	SIZE MEDIDA	mm		inch	
		mm	inch	mm	inch
70 BCH 11	6	178	7	8.70	11/32

RADIAL / RADIAL DIAGONAL / BIAS PLY



BTR		EJES LIBRES FREE AXLE			
CODE	SIZE MEDIDA	mm		inch	
		mm	inch	mm	inch
70 BTR 11	6	178	7	8.70	11/32

RADIAL / RADIAL DIAGONAL / BIAS PLY





GAP		EJES DE TRACCION FOR DRIVE AXLE APPLICATION			
CODE	SIZE MEDIDA	mm		inch	
		mm	inch	mm	inch
75 GAP 12	7	194	7 5/8	9.50	12/32
80 GAP 12	8	203	8	9.50	12/32
85 GAP 12	9	219	8 5/8	9.50	12/32
90 GAP 12	10	229	9	9.50	12/32

RADIAL / RADIAL



TRA		EJES LIBRES FREE AXLE			
CODE	SIZE MEDIDA	mm		inch	
		mm	inch	mm	inch
75 TRA 12	7	194	7 5/8	9.0	12/32
80 TRA 12	8	203	8	9.0	12/32
82 TRA 12	8.2	210	8 1/4	9.0	12/32
85 TRA 12	9	219	8 5/8	9.0	12/32
90 TRA 12	10	230	9	9.0	12/32
93 TRA 12	10.5	240	9 3/8	9.0	12/32
97 TRA 12	12	250	9 7/8	9.0	12/32

RADIAL / RADIAL DIAGONAL / BIAS PLY



RAP		EJES LIBRES FREE AXLE			
CODE	SIZE MEDIDA	mm		inch	
		mm	inch	mm	inch
75 RAP 15	7	194	7 5/8	11.90	15/32
80 RAP 15	8	203	8	11.90	15/32
82 RAP 15	8.2	210	8 1/4	11.90	15/32
85 RAP 15	9	219	8 5/8	11.90	15/32
90 RAP 15	10	229	9	11.90	15/32
92 RAP 15	10.5	235	9 1/4	11.90	15/32
96 RAP 15	11	248	9 3/4	11.90	15/32
100 RAP 15	12	254	10	11.90	15/32
104 RAP 15	12.5	267	10 1/2	11.90	15/32

RADIAL / RADIAL





RAPM



RAPM		EJES LIBRES FREE AXLE			
CODE	SIZE MEDIDA	mm		inch	
		mm	inch	mm	inch
82 RAPM 15	8.2	210	8 1/4	11.90	15/32
85 RAPM 15	9	219	8 5/8	11.90	15/32
90 RAPM 15	10	229	9	11.90	15/32

RADIAL / RADIAL    DIAGONAL / BIAS PLY



RAP-L



RAP-L		EJES LIBRES FREE AXLE			
CODE	SIZE MEDIDA	mm		inch	
		mm	inch	mm	inch
75 RAP-L 15	7	194	7 5/8	11.90	15/32
80 RAP-L 15	8	203	8	11.90	15/32
85 RAP-L 15	9	219	8 5/8	11.90	15/32

RADIAL / RADIAL    DIAGONAL / BIAS PLY



RT



RT		EJES DE TRACCION FOR DRIVE AXLE APPLICATION			
CODE	SIZE MEDIDA	mm		inch	
		mm	inch	mm	inch
75 RT 18	7	194	7 5/8	14.30	18/32
80 RT 18	8	203	8	14.30	18/32
82 RT 18	8.2	210	8 1/4	14.30	18/32
85 RT 18	9	219	8 5/8	14.30	18/32
90 RT 18	10	229	9	14.30	18/32
92 RT 18	10.5	235	9 1/4	14.30	18/32
70 RT 22	6	178	7	17.50	22/32
75 RT 22	7	194	7 5/8	17.50	22/32
80 RT 22	8	203	8	17.50	22/32
82 RT 22	8.2	210	8 1/4	17.50	22/32
85 RT 22	9	219	8 5/8	17.50	22/32
90 RT 22	10	230	9	17.50	22/32
92 RT 22	10.5	235	9 1/4	17.00	22/32
97 RT 22	12	250	9 7/8	17.50	22/32

RADIAL / RADIAL    DIAGONAL / BIAS PLY





## BTM



<b>BTM</b>		EJES DE TRACCION FOR DRIVE AXLE APPLICATION							
CODE	SIZE MEDIDA	mm		inch		mm		inch	
		mm	inch	mm	inch	mm	inch	mm	inch
80 BTM 18	8	203	8	14.30	18/32				
85 BTM 18	9	219	8 5/8	14.30	18/32				
90 BTM 18	10	229	9	14.30	18/32				
94 BTM 18	10.5	240	9 1/2	14.30	18/32				
82 BTM 22	8.2	210	8 1/4	17.50	22/32				
85 BTM 22	9	219	8 5/8	17.50	22/32				
90 BTM 22	10	229	9	17.50	22/32				
82 BTM 26	8.2	210	8 1/4	20.60	26/32				
85 BTM 26	9	219	8 5/8	20.60	26/32				
90 BTM 26	10	229	9	20.60	26/32				
94 BTM 26	10.5	240	9 3/4	20.00	26/32				



RADIAL / RADIAL



## BAPM



<b>BAPM</b>		EJES LIBRES FREE AXLE							
CODE	SIZE MEDIDA	mm		inch		mm		inch	
		mm	inch	mm	inch	mm	inch	mm	inch
75 BAPM 18	7	194	7 5/8	14.30	18/32				
80 BAPM 18	8	203	8	14.30	18/32				
85 BAPM 18	9	219	8 5/8	14.30	18/32				
90 BAPM 18	10	229	9	14.30	18/32				
92 BAPM 18	10.5	235	9 1/4	14.30	18/32				



RADIAL / RADIAL DIAGONAL / BIAS PLY



## SAW



<b>SAW</b>		EJES LIBRES FREE AXLE							
CODE	SIZE MEDIDA	mm		inch		mm		inch	
		mm	inch	mm	inch	mm	inch	mm	inch
75 SAW 15	7	194	7 5/8	12.00	15/32				
80 SAW 15	8	203	8	12.00	15/32				
85 SAW 15	9	219	8 5/8	12.00	15/32				
94 SAW 15	10.5	240	9 1/2	12.00	15/32				



RADIAL / RADIAL DIAGONAL / BIAS PLY



# SINGLE TIRE

## RETREAD DESIGNS



## B20



M+S

### B20 SINGLE TIRE

CODE	SIZE MEDIDA	mm		inch	
		mm	inch	mm	inch
112 B20 16.5	13.5	287	11 1/4	13.00	16.5/32
115 B20 16.5	13.8	295	11 5/8	13.00	16.5/32
152 B20 16.5	15.2	387	11 1/4	13.00	16.5/32



RADIAL / RADIAL



## SWT



M+S

### SWT SINGLE TIRE

CODE	SIZE MEDIDA	mm		inch	
		mm	inch	mm	inch
124 SWT 16	14.5	320	12 1/2	13.00	16/32



RADIAL / RADIAL



## WSS



### WSS SINGLE TIRE

CODE	SIZE MEDIDA	mm		inch	
		mm	inch	mm	inch
152 WSS 16.5	15.2	387	15 1/4	13.50	16.5/32



# REGIONAL RETREAD DESIGNS

---

RETREAD RUBBER | CUSHION GUM | ENVELOPES | CURING TUBES | CHEMICALS | REPAIR MATERIALS  
[ORDERS@HBPLUSBANDAMATIC.COM](mailto:ORDERS@HBPLUSBANDAMATIC.COM) | [WWW.HBPLUS.US](http://WWW.HBPLUS.US)



## SA



### SA

EJES LIBRES  
FREE AXLE

CODE	SIZE MEDIDA	mm		inch	
		mm	inch	mm	inch
80 SA 15	8	203	8	11.90	15/32
85 SA 15	9	219	8 5/8	11.90	15/32
90 SA 15	10	229	9	11.90	15/32
92 SA 15	10.5	235	9 1/4	11.90	15/32
75 SA 18	7	194	7 5/8	14.30	18/32
80 SA 18	8	203	8	14.30	18/32
82 SA 18	8.2	210	8 1/4	14.30	18/32
85 SA 18	9	219	8 5/8	14.30	18/32
90 SA 18	10	229	9	14.30	18/32
92 SA 18	10.5	235	9 1/4	14.30	18/32



RADIAL / RADIAL

## SAP



### SAP

EJES LIBRES Y DE TRACCION  
FOR DRIVE AXLE APPLICATION

CODE	SIZE MEDIDA	mm		inch	
		mm	inch	mm	inch
70 SAP 17.5	6	180	7	14.00	17.5/32
74 SAP 17.5	6.5	190	7 1/2	14.00	17.5/32
80 SAP 17.5	8	203	8	14.00	17.5/32
82 SAP 17.5	8.2	210	8 1/4	14.00	17.5/32
85 SAP 17.5	9	219	8 5/8	14.00	17.5/32
90 SAP 17.5	10	229	9	14.00	17.5/32
94 SAP 17.5	10.5	240	9 1/2	14.00	17.5/32
97 SAP 17.5	12	250	9 7/8	14.00	17.5/32
102 SAP 17.5	12.2	260	10 1/4	14.00	17.5/32



RADIAL / RADIAL DIAGONAL / BIAS PLY

## SAM



### SAM

EJES LIBRES Y DE TRACCION  
FOR DRIVE AXLE APPLICATION

CODE	SIZE MEDIDA	mm		inch	
		mm	inch	mm	inch
57 SAM 18	3.7	149	5 7/8	14.30	18/32
62 SAM 18	4.2	159	6 1/4	14.30	18/32
65 SAM 18	5	168	6 5/8	14.30	18/32
70 SAM 18	6	180	7	14.30	18/32
75 SAM 18	7	194	7 5/8	14.30	18/32
80 SAM 18	8	203	8	14.30	18/32
82 SAM 18	8.2	210	8 1/4	14.30	18/32
85 SAM 18	9	219	8 5/8	14.30	18/32
90 SAM 18	10	229	9	14.30	18/32
92 SAM 18	10.5	235	9 1/4	14.00	18/32
94 SAM 18	10.7	241	9 1/2	14.30	18/32
97 SAM 18	12	250	9 7/8	14.303	18/32



RADIAL / RADIAL







LW		EJES LIBRES FOR FREE AXLE APPLICATION			
CODE	SIZE MEDIDA	mm		inch	
		mm	inch	mm	inch
80 LW 22	8	203	8	17.50	22/32
85 LW 22	9	219	8 5/8	17.50	22/32
90 LW 22	10	229	9	17.50	22/32
92 LW 22	10.5	235	9 1/4	17.50	22/32
97 LW 22	12	250	9 7/8	17.50	22/32
104 LW 22	12.5	267	10 1/2	17.50	22/32

RADIAL / RADIAL DIAGONAL / BIAS PLY



DT		EJES DE TRACCION FOR DRIVE AXLE APPLICATION			
CODE	SIZE MEDIDA	mm		inch	
		mm	inch	mm	inch
70 DT 22	6	180	7 5/8	17.50	22/32
74 DT 22	6.5	190	7 1/2	17.50	22/32
80 DT 24	8	203	8	19	24/32
85 DT 24	9	219	8 5/8	19	24/32
90 DT 24	10	229	9	19	24/32

RADIAL / RADIAL



BL		EJES DE TRACCION FOR DRIVE AXLE APPLICATION			
CODE	SIZE MEDIDA	mm		inch	
		mm	inch	mm	inch
85 BL 15	9	220	8 5/8	11.90	15/32
90 BL 15	10	230	9	11.90	15/32
94 BL 15	10.5	240	9 1/2	11.90	15/32
97 BL 15	12	250	9 7/8	11.90	15/32

RADIAL / RADIAL





**BLI**



<b>BLI</b>		EJES DE TRACCION FOR DRIVE AXLE APPLICATION							
CODE	SIZE MEDIDA	mm		inch		mm		inch	
		80 BLI 12	8	203	8	9	12/32		
82 BLI 12	8.2	210	8 1/4	9	12/32				
85 BLI 12	9	219	8 5/8	9	12/32				
90 BLI 12	10	229	9	9	12/32				



**BT**



<b>BT</b>		EJES DE TRACCION FOR DRIVE AXLE APPLICATION							
CODE	SIZE MEDIDA	mm		inch		mm		inch	
		80 BT 19	8	203	8	15.10	19/32		
85 BT 19	9	219	8 5/8	15.10	19/32				
90 BT 19	10	229	9	15.10	19/32				

M + S

RADIAL / RADIAL



**BT2**



<b>BT2</b>		EJES DE TRACCION FOR DRIVE AXLE APPLICATION							
CODE	SIZE MEDIDA	mm		inch		mm		inch	
		80 BT2 26	8	203	8	20.60	26/32		
85 BT2 26	9A	219	8 5/8	20.60	26/32				
90 BT2 26	10	229	9	20.60	26/32				

M + S





**M + S**

<b>WE</b>		EJES DE TRACCION FOR DRIVE AXLE APPLICATION			
CODE	SIZE MEDIDA	mm		inch	
		mm	inch	mm	inch
85 WE 24	9	219	8 5/8	19.00	24/32
90 WE 24	10	229	9	19.00	24/32
97 WE 24	12	250	9 7/8	19.00	24/32
102 WE 24	12.2	260	10 1/4	19.00	24/32
107 WE 24	12.6	275	10 7/8	19.00	24/32

RADIAL / RADIAL



**M + S**

<b>GRIP</b>		EJES DE TRACCION FOR DRIVE AXLE APPLICATION			
CODE	SIZE MEDIDA	mm		inch	
		mm	inch	mm	inch
70 GRIP 22	6	178	7	17.50	22/32
75 GRIP 22	7	194	7 5/8	17.50	22/32
80 GRIP 22	8	203	8	17.50	22/32
85 GRIP 22	9	219	8 5/8	17.50	22/32

RADIAL / RADIAL



**M + S**

<b>MTM3</b>		EJES DE TRACCION FOR DRIVE AXLE APPLICATION			
CODE	SIZE MEDIDA	mm		inch	
		mm	inch	mm	inch
82 MTM3 26	8.2	210	8 1/4	20.60	26/32
85 MTM3 26	9	219	8 5/8	20.60	26/32
90 MTM3 26	10	229	9	20.60	26/32

RADIAL / RADIAL





**BR**



<b>BR</b>		EJES DE TRACCION FOR DRIVE AXLE APPLICATION			
CODE	SIZE MEDIDA	mm		inch	
		mm	inch	mm	inch
<b>64 BR 16</b>	4.5	165	6 1/2	12.70	16/32
<b>70 BR 16</b>	6	178	7	12.70	16/32
<b>76 BR 17</b>	7.5	197	7 3/4	13.50	17/32
<b>80 BR 17</b>	8	203	8	13.50	17/32



RADIAL / RADIAL



**PR**



<b>PR</b>		EJES DE TRACCION FOR DRIVE AXLE APPLICATION			
CODE	SIZE MEDIDA	mm		inch	
		mm	inch	mm	inch
<b>77 PR 26</b>	7.7	200	7 7/8	20.60	26/32
<b>82 PR 26</b>	8.2	210	8 1/4	20.60	26/32
<b>85 PR 26</b>	9	219	8 5/8	20.60	26/32
<b>97 PR 26</b>	12	250	9 7/8	20.60	26/32



RADIAL / RADIAL



**DL**



<b>DL</b>		EJES DE TRACCION FOR DRIVE AXLE APPLICATION			
CODE	SIZE MEDIDA	mm		inch	
		mm	inch	mm	inch
<b>75 DL 22</b>	7	194	7 5/8	17.50	22/32
<b>80 DL 22</b>	8	203	8	17.50	22/32
<b>82 DL 22</b>	8.2	210	8 1/4	17.50	22/32
<b>85 DL 22</b>	9	219	8 5/8	17.50	22/32
<b>90 DL 22</b>	10	229	9	17.50	22/32



RADIAL / RADIAL



# URBAN

## RETREAD DESIGNS

---

RETREAD RUBBER | CUSHION GUM | ENVELOPES | CURING TUBES | CHEMICALS | REPAIR MATERIALS  
ORDERS@HBPLUSBANDAMATIC.COM | WWW.HBPLUS.US





WHR		EJES LIBRES Y DE TRACCION FOR DRIVE AXLE APPLICATION							
CODE	SIZE MEDIDA	mm		inch		mm		inch	
		75 WHR 24	7	194	7 5/8	19.00	24/32		
80 WHR 24	8	203	8	19.00	24/32				
85 WHR 24	9	219	8 5/8	19.00	24/32				
92 WHR 24	10.5	235	9 1/4	19.00	24/32				
97 WHR 24	12	250	9 7/8	19.00	24/32				
103 WHR 24	14	263	10 3/8	19.00	24/32				

RADIAL / RADIAL



WT		EJES DE TRACCION FOR DRIVE AXLE APPLICATION							
CODE	SIZE MEDIDA	mm		inch		mm		inch	
		80 WT 26	8	203	8	20.60	26/32		
85 WT 26	9	219	8 5/8	20.60	26/32				

RADIAL / RADIAL

M + S



WM		EJES DE TRACCION FOR DRIVE AXLE APPLICATION							
CODE	SIZE MEDIDA	mm		inch		mm		inch	
		82 WM 26	8.2	210	8 1/4	20.50	26/32		
85 WM 26	9	219	8 5/8	20.50	26/32				
90 WM 26	10	230	9	20.50	26/32				
94 WM 26	10.5	241	9 1/2	20.50	26/32				
97 WM 26	12	250	9 7/8	20.50	26/32				
102 WM 26	12	260	10 1/4	20.50	26/32				
105 WM 26	12.6	270	10 5/8	20.50	26/32				

RADIAL / RADIAL





# ZY2



ZY2		EJES DE TRACCION FOR DRIVE AXLE APPLICATION			
CODE	SIZE MEDIDA	mm		inch	
		mm	inch	mm	inch
80 ZY2 22	8	203	8	17.50	22/32
85 ZY2 22	9	219	8 5/8	17.50	22/32

RADIAL / RADIAL



# ZY2M



ZY2M		EJES DE TRACCION FOR DRIVE AXLE APPLICATION			
CODE	SIZE MEDIDA	mm		inch	
		mm	inch	mm	inch
90 ZY2M 23	10	230	9	18.00	23/32
94 ZY2M 23	10.5	240	9 3/4	18.00	23/32
97 ZY2M 23	12	250	9 7/8	18.00	23/32
102 ZY2M 23	12.2	260	10 1/4	18.00	23/32

RADIAL / RADIAL



# WW



WW		EJES DE TRACCION FOR DRIVE AXLE APPLICATION			
CODE	SIZE MEDIDA	mm		inch	
		mm	inch	mm	inch
130 WW 18	15	330	13	14.30	18/32
142 WW 21	16.2	362	14 1/4	16.70	21/32

RADIAL / RADIAL



# ON / OFF ROAD

## RETREAD DESIGNS







M + S

LT		MULTITRACCION MULTITRACCION			
CODE	SIZE MEDIDA	mm		inch	
		mm	inch	mm	inch
80 LT 15	8	203	8	11.90	15/32
84 LT 15	8.2	216	8 1/2	11.90	15/32



AT		EJES DE TRACCION FOR DRIVE AXLE APPLICATION			
CODE	SIZE MEDIDA	mm		inch	
		mm	inch	mm	inch
82 AT 28	8.2	210	8 1/4	22.00	28/32
85 AT 28	9	219	8 5/8	22.00	28/32
90 AT 28	10	230	9	22.00	28/32
94 AT 28	10.5	240	9 1/2	22.00	28/32
97 AT 28	12	250	9 7/8	22.00	28/32
102 AT 28	12.2	260	10 1/4	22.00	28/32



RADIAL / RADIAL





M + S

WH		EJES DE TRACCION FOR DRIVE AXLE APPLICATION				
CODE	SIZE MEDIDA	mm		inch		
		mm	inch	mm	inch	
80 WH 26	8	203	8	20.60	26/32	
84 WH 26	8.5	216	8 1/2	20.60	26/32	
90 WH 26	10	229	9	20.60	26/32	
94 WH 26	10.5	241	9 1/2	20.60	26/32	
97 WH 26	12	250	9 7/8	20.60	26/32	
105 WH 26	12.5	267	10 5/8	20.60	26/32	



RADIAL / RADIAL DIAGONAL / BIAS PLY



# OFF ROAD

## RETREAD DESIGNS

---

RETREAD RUBBER | CUSHION GUM | ENVELOPES | CURING TUBES | CHEMICALS | REPAIR MATERIALS  
[ORDERS@HBPLUSBANDAMATIC.COM](mailto:ORDERS@HBPLUSBANDAMATIC.COM) | [WWW.HBPLUS.US](http://WWW.HBPLUS.US)





**M + S**

<b>WBL</b>		EJES DE TRACCION FOR DRIVE AXLE APPLICATION			
CODE	SIZE MEDIDA	mm		inch	
		<b>142 WBL 24</b>	<b>16.2</b>	<b>362</b>	<b>14 1/4</b>

**RADIAL / RADIAL**



**M + S**

<b>ML</b>		EJES DE TRACCION FOR DRIVE AXLE APPLICATION			
CODE	SIZE MEDIDA	mm		inch	
		<b>80 ML 28</b>	<b>8</b>	<b>203</b>	<b>8</b>
<b>85 ML 28</b>	<b>9</b>	<b>219</b>	<b>8 5/8</b>	<b>22.20</b>	<b>28/32</b>
<b>92 ML 28</b>	<b>10.5</b>	<b>235</b>	<b>8 1/4</b>	<b>22.20</b>	<b>28/32</b>
<b>97 ML 28</b>	<b>12</b>	<b>250</b>	<b>9 7/8</b>	<b>22.20</b>	<b>28/32</b>

**RADIAL / RADIAL    DIAGONAL / BIAS PLY**





SM		EJES DE TRACCION FOR DRIVE AXLE APPLICATION							
CODE	SIZE MEDIDA	mm		inch		mm		inch	
		85 SM 27	9	219	8 1/2	21.00	27/32		
90 SM 27	10	230	9	21.00	27/32				
94 SM 27	10.5	240	9 1/2	21.00	27/32				
97 SM 27	12	250	9 7/8	21.00	27/32				
107 SM 32	12.7	276	10 7/8	25.40	32/32				

RADIAL / RADIAL

M + S



BCT		EJES LIBRES Y DE TRACCION FOR DRIVE AXLE APPLICATION							
CODE	SIZE MEDIDA	mm		inch		mm		inch	
		100 BCT 26	12	254	10	20.60	26/32		
113 BCT 26	13.6	289	11 3/8	20.60	26/32				

RADIAL / RADIAL DIAGONAL / BIAS PLY

M + S

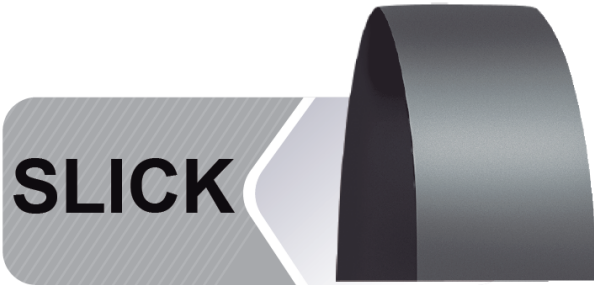


# INDUSTRIAL RETREAD DESIGNS

---

RETREAD RUBBER | CUSHION GUM | ENVELOPES | CURING TUBES | CHEMICALS | REPAIR MATERIALS  
[ORDERS@HBPLUSBANDAMATIC.COM](mailto:ORDERS@HBPLUSBANDAMATIC.COM) | [WWW.HBPLUS.US](http://WWW.HBPLUS.US)





SLICK		INDUSTRIAL INDUSTRIAL							
CODE	SIZE MEDIDA	mm		inch		mm		inch	
		130 SLICK 14	15	330	13	11.10	14/32		
80 SLICK 18	8	203	8	14.30	18/32				

MONTACARGA / FORKLIFT



S72		INDUSTRIAL INDUSTRIAL							
CODE	SIZE MEDIDA	mm		inch		mm		inch	
		104 S7237	12.5	266	10 1/2	29.00	37/32		



KAJ7		INDUSTRIAL INDUSTRIAL							
CODE	SIZE MEDIDA	mm		inch		mm		inch	
		95 KAJ71 29	10	245	9 5/8	23.00	29/32		
105 KAJ71 29	12.5	269	10 5/8	23.00	29/32				



## LDT



## LDT

INDUSTRIAL  
INDUSTRIAL

CODE	SIZE MEDIDA	mm		inch	
		mm	inch	mm	inch
126 LDT 30	14.6	324	12 3/4	24.00	30/32

## S70



## S70

INDUSTRIAL  
INDUSTRIAL

CODE	SIZE MEDIDA	mm		inch	
		mm	inch	mm	inch
67 S70 25	6.7	176	6 7/8	20.00	25/32

## MC1



## MC1

INDUSTRIAL  
INDUSTRIAL

CODE	SIZE MEDIDA	mm		inch	
		mm	inch	mm	inch
47 MC1 20	1	123	4 7/8	16.00	20/32
51 MC1 20	2	130	5 1/8	16.00	20/32
62 MC1 20	4	160	6 1/4	16.00	20/32







# **AUXILIARY**

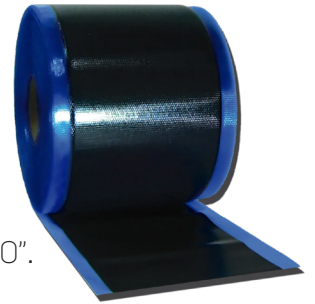
## **ITEMS**

## CUSHION GUM

### CALENDERED CUSHION GUM

CUSHION TYPE	THICKNESS	TEMPERATURE
LOW TEMPERATURE	.050"	221F 105C
HIGH TEMPERATURE	.050"	302F 150C

Natural rubber compound, available in a variety of widths, from 1" stripping to 30". Custom sizes available upon request.



### STRIP CUSHION GUM

CODE	DIMENSIONS	TEMPERATURE
CG0825/8X3/8LT	2 5/8" X 3/8"	221F 105C

Natural rubber compound with excellent adhesion for use in AZ cushion extruder machines.



### EXTRUDER ROPE

CODE	DIMENSIONS	TEMPERATURE
R045/16LT	5/16"	221F 105C

Natural rubber compound with excellent adhesion, designed to work with any extruder guns and used to repair or fill cavities.



## OUTER ENVELOPES

### EXTENDED SKIRT OUTER ENVELOPES FOR RIMLESS (ARC SYSTEM)

ENVELOPE SIZE	TIRE SIZE
32X28	265/70-19.5 • 235/70-19.5 • 245/65-19.5 • 245/70-19.5 • 225/90-17.5 • 9.5-17.5 • 825-16
35X29	275/70-22.5 • 265/70-22.5 • 255/70-22.5 • 245/75-22.5 • 305/70-19.5 • 285/70-19.5 • 245/70-19.5
40X32	285/75-24.5 • 305/70-22.5 • 295/70-22.5 • 295/75-22.5 • 275/80-22.5 • 295/80-22.5 • 11-22.5 • 1100-20 • 1000-20
40X34	385/55-22.5 • 285/75-24.5 • 11-22.5 • 10-22.5 • 315/70-22.5 • 295/80-22.5
42X36	315/80-22.5 • 315/75-22.5 • 12-22.5 • 335/80-20 • 13/80-20 • 12/80-20
42X34	11-24.5 • 295/80-24.5 • 12-22.5 • 305/85-22.5
48X45	1400-24 • 445/65-22.5 • 425/65-22.5 • 455/55-22.5



When a rim type "ARC" or equivalent flanges are used \* Other sizes available upon request

### REGULAR SKIRT OUTER ENVELOPES FOR OUTER & INNER SYSTEM

ENVELOPE SIZE	TIRE SIZE
SL-10	1000-20 • 11-22.5 • 12-22.5 • 315/75-22.5

Inner and outer envelopes for any precured tyre retreading system.

### LONGER SKIRT OUTER ENVELOPES

ENVELOPE SIZE	TIRE SIZE
XL-11	305/70-22.5 • 315/70-22.5 • 11-22.5 • 10-22.5*

Outer Envelopes "XL" type when extra skirt is needed.

When a rim type "OLIVER" or equivalent flanges are used.

\*Size compatible with ARC system



## CURING TUBES & ACCESSORIES

### CURING TUBE TYPE U-TUBE | ULTRA THIN WALL

CODE	RIM SIZE	TIRE SIZE
U-TUBE 1000-20	20"	1000-20
U-TUBE 11-22.5	22.5"	11-22.5
U-TUBE 11-24.5	24 / 24.5"	11-24.5



U-TUBE curing tubes are soft, light and easy to handle.

Special heat resistant compound for best performance and higher number of cures.

### ENVELOPE & CURING TUBE VALVES

CODE	DESCRIPTION
VALVE P.I.V.	BRASS VALVE FOR ENVELOPE TYPE "2" Ø 50 mm
VALVE P.I.V. 2	BRASS VALVE TYPE "B" Ø 12/8 mm FOR CURING TUBE



High quality and durable MAE valves for Envelopes & Curing Tubes

### WICKING PADS

CODE	DIMENSIONS	RETREAD SYSTEM
PVE 2 MAE	1250MMX175MM	DOUBLE ENVELOPE



Rubber wicking pads used to prevent envelope valve markings on the retreaded tire.

### ENVELOPE LUBRICANT AND HIGH-TEMP POLY

CODE	DESCRIPTION
LUBE-ENV	1-GAL ENVELOPE LUBRICANT
POL-12	12" WIDTH, 75GA POLYPROPYLENE FILM, 4,000 SQ FEET/ROLL



FIND MORE PRODUCTS AND INFORMATION  
BY SCANNING THE QR CODE  
OR VISITING [WWW.HBPLUS.US](http://WWW.HBPLUS.US)

## CHEMICALS

### HEAT VULCANIZING CEMENT

CODE	DESCRIPTION	PACKAGE TYPE	VOLUME
ST621CBT	SPRAY CEMENT	PAIL	5 GAL
ST711CBT	BRUSH CEMENT	PAIL	5 GAL



Specially formulated for tire retreading and repair patch installations that require heat curing

### COLD VULCANIZING CEMENT

CODE	DESCRIPTION	PACKAGE TYPE	VOLUME
MB250	BLUE CEMENT	CAN	8 OZ
MB1000	BLUE CEMENT	CAN	34 OZ



Chemical cement for the application of patches on all types of tires and tubes that require cold curing

### SOLVENT

CODE	DESCRIPTION	PACKAGE TYPE	VOLUME
G1CBT	SOLVENT	PAIL	5 GAL



Chemical used to remove contaminants from rubber surfaces

### PAINT

CODE	DESCRIPTION	PACKAGE TYPE	VOLUME
PAINT	PAINT	PAIL	5 GAL
PAINT55	PAINT	DRUM	55 GAL



Water based black tire paint for immaculate finish on retreaded tires



## PATCHES

### ALL-PURPOSE PATCHES "SMT"

CODE	SIZE	PACKAGE TYPE	PIECES PER PACKAGE	CURE TYPE
SMT1	2 1/4" X 2 1/4"	BAG	50	COLD CURE (BLUE CEMENT)
SMT2	2 5/8" X 2 5/8"	BAG	50	COLD CURE (BLUE CEMENT)



Cold Cure (Blue Cement) patches designed for crown injuries in radial and conventional tires

### RADIAL PATCHES "BRAH"

CODE	SIZE	PACKAGE TYPE	PIECES PER PACKAGE	CURE TYPE
BRAH20	3 1/8" X 4 7/8"	BOX	10	HEAT CURE (BLACK CEMENT)
BRAH22	2 7/8" X 6 7/8"	BOX	10	HEAT CURE (BLACK CEMENT)
BRAH40	3 7/8" X 7 5/8"	BOX	10	HEAT CURE (BLACK CEMENT)



Premium patches for radial tires, manufactured with the highest quality materials and designed for crown and sidewall injuries. Other sizes available upon request

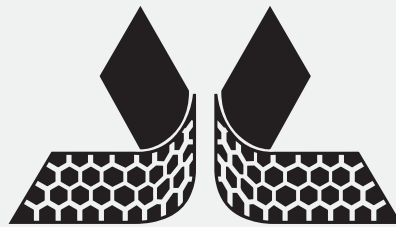
### PLUG STEMS

CODE	SIZE	PACKAGE TYPE	PIECES PER PACKAGE	CURE TYPE
STEM 1/4	1/4"	BOX	20	COLD CURE (BLUE CEMENT)
STEM 3/8	3/8"	BOX	20	COLD CURE (BLUE CEMENT)



Cold Cure (Blue Cement) plug stem inserts designed for easy installation exclusively in crown injuries. For use in radial and conventional tires along with the corresponding repair unit.





H.B. **plus** BANDAMATIC  
R E T R E A D R U B B E R



HB **plus** Bandamatic, Inc.  
283 Lockhaven Dr STE 105  
Houston, TX 77073  
Phone: 281-821-9719  
Fax: 281-821-1027  
E-Mail: [hq@hbplusbandamatic.com](mailto:hq@hbplusbandamatic.com)  
[WWW.HBPLUS.US](http://WWW.HBPLUS.US)