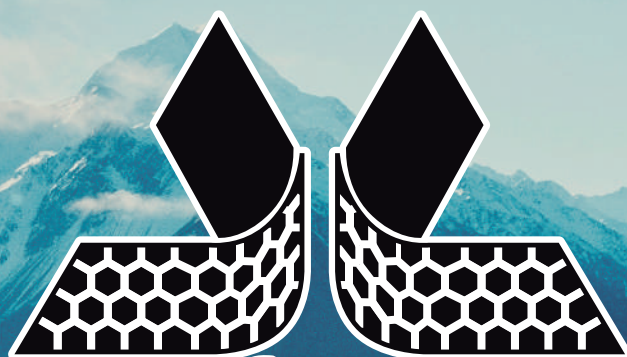


TREAD DESIGNS
DISEÑO DE BANDAS
ISO 9001 - 2015
MAY/ MAYO

TREAD DESIGNS

TECHNOLOGY ROLLING AROUND THE WORLD.
TECNOLOGÍA QUE RUEDA POR EL MUNDO.



H.B. plus BANDAMATIC
RETREAD RUBBER

2020



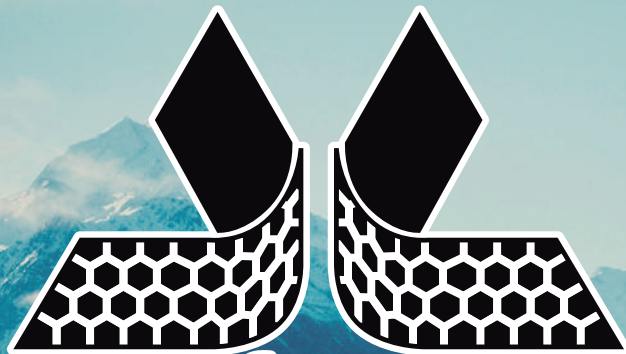
Av. de la Luz N° 80 Parque Industrial la Luz,
Cuautitlán Izcalli Edo. De México. C.P. 54716



www.hbplusbandamatic.com



+ (52) 58 72 06 38
+ (52) 46 28 28 00



H.B. plus BANDAMATIC
RETREAD RUBBER



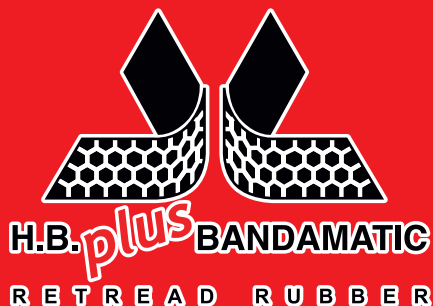
TECHNOLOGY ROLLING AROUND THE WORLD.
TECNOLOGÍA QUE RUEDA POR EL MUNDO.

TECHNOLOGY ROLLING AROUND THE WORLD.
TECNOLOGÍA QUE RUEDA POR EL MUNDO.



Presence in more than **50** countries.
Presencia en más de **50** países.

2020



We export to more than 50 countries in North America, Central America, South America, Europe the Caribbean.
Exportamos a más de 50 países en América del Norte, América Central, América del Sur, Europa y el Caribe

Distribución en :
México
Estados Unidos (Los Ángeles,
Houston, Texas)
Europa (Amberes Bélgica).

Distribution :
México
Estados Unidos (Los Ángeles,
Houston, Texas)
Europa, (Amberes Bélgica).

CERTIFIED 3PMSF

**DESIGNS AUTHORIZED
BY THE EUROPEAN
NORM 3PMSF**

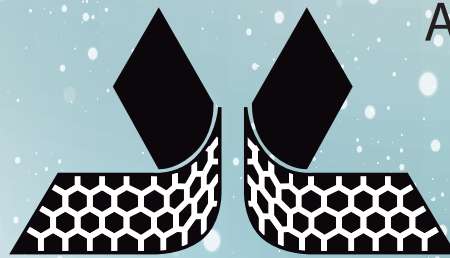
SYMBOL
ALPINE



3PMSF

**DISEÑOS CON
CERTIFICADOS
EN EUROPA**

SIMBOLO
ALPINO



H.B. *plus* BANDAMATIC

RETREAD RUBBER



STC

WE

BTM2

B43

AT

BM

BNT

www.hbplusbandamatic.com

H. B. PLUS BANDAMATIC

We are a team of people committed to our work, where each product is carefully engineered to exceed the expectations of our customers.

Start saving immediately, contact us and an advisor will provide all the information required to select the kind of tread that best suits your needs.

Join the hundreds of customers in over 50 countries that reward us with their preference.

Be part of H.B. plus BANDAMATIC,
Technology Rolling over the world

Somos un equipo comprometido con nuestro trabajo, donde cada producto es cuidadosamente fabricado para superar las expectativas de todos nuestros clientes.

Empiece a ahorrar de inmediato, contáctanos y un asesor le brindará toda la información que se requiera para seleccionar el tipo de banda que más se adecúe a sus necesidades.

Forme parte de los cientos de clientes que en más de 50 países nos premian con su preferencia.
Sea parte de H.B. plus BANDAMATIC
Tecnología que rueda por el mundo.

CATALOG DESIGN INDEX TABLA PARA LOCALIZAR DISEÑOS EN CATÁLOGO

DESIGN	PAGE	DESIGN	PAGE	DESIGN	PAGE	DESIGN	PAGE	DESIGN	PAGE	DESIGN	PAGE
DISEÑO	PÁGINA	DISEÑO	PÁGINA	DISEÑO	PÁGINA	DISEÑO	PÁGINA	DISEÑO	PÁGINA	DISEÑO	PÁGINA
AS	19	BR	18	DL1	20	ML	29	SAM	11	WD	16
AT	26	BST	4	DT	14	MLZ	27	SAP	11	WE	16
ATL	27	BT	15	DY	25	MT	12	SAW	7	WH	28
B20	8	BT2	15	GAP	2	MTM	6	SAWL	7	WHR	21
B43	22	BTM	5	GC	21	MTM2	17	SLICK	31	WM	23
BAPM	7	BTM2	18	GRIP	17	MTM3	17	SM	30	WT	23
BAR	22	BTR	1	HS	1	PR	19	STC	8	WW	24
BCH	1	BUB	20	KAJ7	31	RAPL	3	SWT	8	ZE	2
BCT	30	CB	3	LDL	6	RAPL	4	TC	25	ZEM	12
BGW	29	CR	21	LDL1	6	RAPM	4	TR1	9	ZEM1	12
BL	14	CROSS	26	LL	27	RT	5	TR2	9	ZY2	24
BLI	15	CROSS1	26	LL1	30	S	20	TRA	2	ZYZM	24
BM	19	DD	13	LPD	24	S72	31	UHS	23		
BMB	18	DDL	13	LT	25	SA	10	UM	22		
BMM	13	DDM	14	LW	11	SA1	10	WB	28		
BNT	16	DL	28	MAP	3	SA15	10	WBL	29		

Because of rubber characteristics, the specified dimension might suffer small variations, but not on its performance.
Hules Banda reserves the right to change its specifications without notice.

Debido a la flexibilidad del hule, las dimensiones especificadas podrían sufrir pequeñas variaciones, las cuales no afectan el desempeño del producto.
Hules Banda se reserva el derecho de modificar las especificaciones sin previo aviso.

Symbols

SIMBOLOGÍA



SNOW / NIEVE



RAIN
LLUVIA



LONG HAUL
RECORRIDO LARGO



OFF ROAD
FUERA DE
CARRETERA



REGIONAL
REGIONAL



SEVERO-
SEVERE



ON / OFF ROAD
MIXTO



METRO CITY
URBANO



INDUSTRIAL
INDUSTRIAL



ON / OFF ROAD
MAXIMUM 60 KM / hr
MIXTO 60 KM MÁXIMA



FREE AXLE APPLICATION
EJES LIBRES



ALL- POSITION
TODA POSICIÓN



TRACTION AXLE APPLICATION
EJES DE TRACCIÓN



SINGLE TIRE
SINGLE TIRE



LONG HAUL
LARGO RECORRIDO



SINGLE TIRE
SINGLE TIRE



REGIONAL
REGIONAL



URBANO
URBANO



ON / OFF ROAD
MIXTO



OFF ROAD
FUERA DE CARRETERA



INDUSTRIAL
INDUSTRIAL



BANDA PARA ARRASTE
LATERAL SHEARRING
RESISTANT



FUEL SAVER
AHORRO COMBUSTIBLE



3PMSF









LONG HAUL / LARGO RECORRIDO

TREAD DESIGNS / DISEÑO DE BANDAS



HS		EJES LIBRES FREE AXLE			
CODE	SIZE MEDIDA	mm		inch	
		mm	inch	mm	inch
70 HS 11	6	178	7	8.70	11/32
73 HS 11	6.5	187	7 3/8	8.70	11/32
75 HS 11	7	194	7 5/8	8.70	11/32
80 HS 11	8	203	8	8.70	11/32
85 HS 11	9	219	8 5/8	8.70	11/32

RADIAL / RADIAL DIAGONAL / BIAS PLY



BCH		EJES LIBRES FREE AXLE			
CODE	SIZE MEDIDA	mm		inch	
		mm	inch	mm	inch
70 BCH 11	6	178	7	8.70	11/32

RADIAL / RADIAL DIAGONAL / BIAS PLY



BTR		EJES LIBRES FREE AXLE			
CODE	SIZE MEDIDA	mm		inch	
		mm	inch	mm	inch
70 BTR 11	6	178	7	8.70	11/32

RADIAL / RADIAL DIAGONAL / BIAS PLY



- ■ ■ RECOMENDADO
- ■ ■ ACEPTABLE
- ■ ■ LIMITADO

- ■ ■ RECOMMENDED
- ■ ■ ACCEPTABLE
- ■ ■ LIMITED



LONG HAUL / LARGO RECORRIDO

TREAD DESIGNS / DISEÑO DE BANDAS



GAP		EJES DE TRACCION FOR DRIVE AXLE APPLICATION			
CODE	SIZE MEDIDA	mm		inch	
		mm	inch	mm	inch
75 GAP 12	7	194	7 5/8	9.50	12/32
80 GAP 12	8	203	8	9.50	12/32
85 GAP 12	9	219	8 5/8	9.50	12/32
90 GAP 12	10	229	9	9.50	12/32

RADIAL / RADIAL



ZE		EJES LIBRES FREE AXLE			
CODE	SIZE MEDIDA	mm		inch	
		mm	inch	mm	inch
75 ZE 18	6	194	7 5/8	14.30	18/32
80 ZE 18	8	203	8	14.30	18/32
85 ZE 18	9	219	8 5/8	14.30	18/32
90 ZE 18	10	229	9	14.30	18/32
93 ZE 20	10.5	240	9 3/8	16.00	20/32
97 ZE 20	12	250	9 7/8	16.00	20/32

RADIAL / RADIAL



TRA		EJES LIBRES FREE AXLE			
CODE	SIZE MEDIDA	mm		inch	
		mm	inch	mm	inch
75 TRA 12	7	194	7 5/8	9.0	12/32
80 TRA 12	8	203	8	9.0	12/32
82 TRA 12	8.2	210	8 1/4	9.0	12/32
85 TRA 12	9	219	8 5/8	9.0	12/32
90 TRA 12	10	230	9	9.0	12/32
93 TRA 12	10.5	240	9 3/8	9.0	12/32
97 TRA 12	12	250	9 7/8	9.0	12/32

RADIAL / RADIAL DIAGONAL / BIAS PLY



- ■ ■ RECOMENDADO
- ■ ■ ACEPTABLE
- ■ ■ LIMITADO

www.hbplusbandamatic.com

- ■ ■ RECOMMENDED
- ■ ■ ACCEPTABLE
- ■ ■ LIMITED



LONG HAUL / LARGO RECORRIDO

TREAD DESIGNS / DISEÑO DE BANDAS



MAP		EJES LIBRES FREE AXLE			
CODE	SIZE MEDIDA	mm inch		mm inch	
90 MAP 18	10	229	9	14.30	18/32

RADIAL / RADIAL



CB		EJES LIBRES FREE AXLE			
CODE	SIZE MEDIDA	mm inch		mm inch	
70 CB 11	6	178	7	8.70	11/32
75 CB 11	7	194	7 5/8	8.70	11/32
80 CB 11	8	203	8	8.70	11/32
50 CB 14	1	127	5	11.10	14/32
56 CB 14	3.5	146	5 3/4	11.10	14/32
60 CB 14	4	152	6	11.10	14/32
70 CB 16	6	178	7	12.70	16/32
75 CB 16	7	194	7 5/8	12.70	16/32
80 CB 17	8	203	8	13.50	17/32
85 CB 17	9	219	8 5/8	13.50	17/32

RADIAL / RADIAL DIAGONAL / BIAS PLY



RAP		EJES LIBRES FREE AXLE			
CODE	SIZE MEDIDA	mm inch		mm inch	
75 RAP 15	7	194	7 5/8	11.90	15/32
80 RAP 15	8	203	8	11.90	15/32
82 RAP 15	8.2	210	8 1/4	11.90	15/32
85 RAP 15	9	219	8 5/8	11.90	15/32
90 RAP 15	10	229	9	11.90	15/32
92 RAP 15	10.5	235	9 1/4	11.90	15/32
96 RAP 15	11	248	9 3/4	11.90	15/32
100 RAP 15	12	254	10	11.90	15/32
104 RAP 15	12.5	267	10 1/2	11.90	15/32

RADIAL / RADIAL



- ■ ■ ■ RECOMENDADO
- ■ ■ ACCEPTABLE
- ■ LIMITADO

www.hbplusbandamatic.com

- ■ ■ ■ RECOMMENDED
- ■ ■ ACCEPTABLE
- ■ LIMITED



LONG HAUL / LARGO RECORRIDO

TREAD DESIGNS / DISEÑO DE BANDAS



RAMP		EJES LIBRES FREE AXLE			
CODE	SIZE MEDIDA	mm		inch	
		mm	inch	mm	inch
82 RAMP 15	8.2	210	8 1/4	11.90	15/32
85 RAMP 15	9	219	8 5/8	11.90	15/32
90 RAMP 15	10	229	9	11.90	15/32

RADIAL / RADIAL DIAGONAL / BIAS PLY



RAP-L		EJES LIBRES FREE AXLE			
CODE	SIZE MEDIDA	mm		inch	
		mm	inch	mm	inch
75 RAP-L 15	7	194	7 5/8	11.90	15/32
80 RAP-L 15	8	203	8	11.90	15/32
85 RAP-L 15	9	219	8 5/8	11.90	15/32

RADIAL / RADIAL DIAGONAL / BIAS PLY



BST		EJES LIBRES FREE AXLE			
CODE	SIZE MEDIDA	mm		inch	
		mm	inch	mm	inch
85 BST 16	9	219	8 5/8	12.50	16/32
90 BST 16	10	229	9	12.50	16/32

RADIAL / RADIAL



- ■ ■ RECOMENDADO
- ■ ■ ACEPTABLE
- ■ ■ LIMITADO

www.hbplusbandamatic.com

- ■ ■ RECOMMENDED
- ■ ■ ACCEPTABLE
- ■ ■ LIMITED



LONG HAUL / LARGO RECORRIDO

TREAD DESIGNS / DISEÑO DE BANDAS



RT



RT		EJES DE TRACCION FOR DRIVE AXLE APPLICATION			
CODE	SIZE MEDIDA	mm		inch	
		mm	inch	mm	inch
84 RT 14	8.5	216	8 1/2	11.10	14/32
57 RT 18	3.7	150	5 7/8	14.30	18/32
62 RT 18	4.2	159	6 1/4	14.30	18/32
65 RT 18	5	168	6 5/8	14.30	18/32
75 RT 18	7	194	7 5/8	14.30	18/32
80 RT 18	8	203	8	14.30	18/32
82 RT 18	8.2	210	8 1/4	14.30	18/32
84 RT 18	8.5	215	8 4/8	14.30	18/32
85 RT 18	9	219	8 5/8	14.30	18/32
90 RT 18	10	229	9	14.30	18/32
92 RT 18	10.5	235	9 1/4	14.30	18/32
70 RT 22	6	178	7	17.50	22/32
75 RT 22	7	194	7 5/8	17.50	22/32
80 RT 22	8	203	8	17.50	22/32
82 RT 22	8.2	210	8 1/4	17.50	22/32
85 RT 22	9	219	8 5/8	17.50	22/32
90 RT 22	10	230	9	17.50	22/32
92 RT 22	10.5	235	9 1/4	17.00	22/32
97 RT 22	12	250	9 7/8	17.50	22/32



RADIAL / RADIAL DIAGONAL / BIAS PLY



BTM



BTM		EJES DE TRACCION FOR DRIVE AXLE APPLICATION			
CODE	SIZE MEDIDA	mm		inch	
		mm	inch	mm	inch
80 BTM 18	8	203	8	14.30	18/32
85 BTM 18	9	219	8 5/8	14.30	18/32
90 BTM 18	10	229	9	14.30	18/32
94 BTM 18	10.5	240	9 1/2	14.30	18/32
82 BTM 22	8.2	210	8 1/4	17.50	22/32
85 BTM 22	9	219	8 5/8	17.50	22/32
90 BTM 22	10	229	9	17.50	22/32
82 BTM 26	8.2	210	8 1/4	20.60	26/32
85 BTM 26	9	219	8 5/8	20.60	26/32
90 BTM 26	10	229	9	20.60	26/32
94 BTM 26	10.5	240	9 3/4	20.00	26/32



RADIAL / RADIAL

- ■ ■ ■ RECOMENDADO
- ■ ■ ACCEPTABLE
- ■ LIMITEDO

www.hbplusbandamatic.com

- ■ ■ ■ RECOMMENDED
- ■ ■ ACCEPTABLE
- ■ LIMITED



LONG HAUL / LARGO RECORRIDO

TREAD DESIGNS / DISEÑO DE BANDAS



MTM		EJES DE TRACCIÓN FOR DRIVE AXLE APPLICATION							
CODE	SIZE MEDIDA	mm		inch		mm		inch	
		100 MTM 23	12	254	10	18.30	23/32		
104 MTM 23	12.5	267	10 1/2	18.30	23/32				

RADIAL / RADIAL



LDL		EJES DE TRACCIÓN FOR DRIVE AXLE APPLICATION							
CODE	SIZE MEDIDA	mm		inch		mm		inch	
		85 LDL 18	9	219	8 5/8	14.30	18/32		

RADIAL / RADIAL



LDL1		EJES DE TRACCIÓN FOR DRIVE AXLE APPLICATION							
CODE	SIZE MEDIDA	mm		inch		mm		inch	
		85 LDL1 18	9	219	8 5/8	14.00	18/32		
90 LDL1 18	10	230	9	14.00	18/32				

RADIAL / RADIAL



- ■ ■ ■ RECOMENDADO
- ■ ■ ACCEPTABLE
- ■ ■ LIMITADO

- ■ ■ ■ RECOMMENDED
- ■ ■ ACCEPTABLE
- ■ ■ LIMITED



LONG HAUL / LARGO RECORRIDO

TREAD DESIGNS / DISEÑO DE BANDAS

BAPM



BAPM

EJES LIBRES
FREE AXLE

CODE	SIZE MEDIDA	mm		inch	
		mm	inch	mm	inch
75 BAPM 18	7	194	7 5/8	14.30	18/32
80 BAPM 18	8	203	8	14.30	18/32
85 BAPM 18	9	219	8 5/8	14.30	18/32
90 BAPM 18	10	229	9	14.30	18/32
92 BAPM 18	10.5	235	9 1/4	14.30	18/32

RADIAL / RADIAL DIAGONAL / BIAS PLY



SAW



SAW

EJES LIBRES
FREE AXLE

CODE	SIZE MEDIDA	mm		inch	
		mm	inch	mm	inch
75 SAW 15	7	194	7 5/8	12.00	15/32
80 SAW 15	8	203	8	12.00	15/32
85 SAW 15	9	219	8 5/8	12.00	15/32
94 SAW 15	10.5	240	9 1/2	12.00	15/32

RADIAL / RADIAL DIAGONAL / BIAS PLY



SAWL



SAWL

EJES LIBRES
FREE AXLE

CODE	SIZE MEDIDA	mm		inch	
		mm	inch	mm	inch
85 SAW L 12	9	219	8 5/8	9.00	12/32
90 SAW L 12	10	230	9	9.00	12/32
97 SAW L 12	12	250	9 7/8	9.00	12/32

RADIAL / RADIAL DIAGONAL / BIAS PLY



- ■ ■ ■ RECOMENDADO
- ■ ■ ACCEPTABLE
- ■ LIMITEDO

www.hbplusbandamatic.com

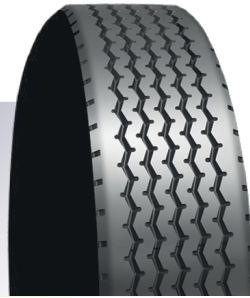
- ■ ■ ■ RECOMMENDED
- ■ ■ ACCEPTABLE
- ■ LIMITED



SINGLE TIRE / SINGLE TIRE

TREAD DESIGNS / DISEÑO DE BANDAS

B20



B20

SINGLE TIRE

CODE	SIZE MEDIDA	mm		inch	
		mm	inch	mm	inch
112 B20 14.0	13.5	287	11 1/4	11.00	14/32
115 B20 14.0	13.8	295	11 5/8	11.00	14/32
112 B20 16.5	13.5	287	11 1/4	13.00	16.5/32
115 B20 16.5	13.8	295	11 5/8	13.00	16.5/32
152 B20 16.5	15.2	387	11 1/4	13.00	16.5/32

M+S



RADIAL / RADIAL



SWT



SWT

SINGLE TIRE

CODE	SIZE MEDIDA	mm		inch	
		mm	inch	mm	inch
124 SWT 16	14.5	320	12 1/2	13.00	16/32

M+S



RADIAL / RADIAL



STC



STC

SINGLE TIRE

CODE	SIZE MEDIDA	mm		inch	
		mm	inch	mm	inch
115 STC 18	13.8	295	11 5/8	14.50	18/32

M+S



RADIAL / RADIAL



3PMSF

- ■ ■ ■ RECOMENDADO
- ■ ■ ■ ACEP TIBLE
- ■ ■ ■ LIMITADO

- ■ ■ ■ RECOMMENDED
- ■ ■ ■ ACCEPTABLE
- ■ ■ ■ LIMITED



SINGLE TIRE / SINGLE TIRE

TREAD DESIGNS / DISEÑO DE BANDAS



TR1



M+S

TR1		SINGLE TIRE							
CODE	SIZE MEDIDA	mm		inch		mm		inch	
		112 SWT 18	13.5	285	11 1/4	14.00	18/32		
115 SWT 18	13.8	295	11 5/8	14.00	18/32				



RADIAL / RADIAL



TR2



M+S

TR2		SINGLE TIRE							
CODE	SIZE MEDIDA	mm		inch		mm		inch	
		115 TR2 18	13.8	295	11 5/8	14.00	18/32		



RADIAL / RADIAL



- ▪ ▪ RECOMENDADO
- ▪ ACEPABLE
- LIMITADO

- ▪ ▪ RECOMMENDED
- ▪ ACCEPTABLE
- LIMITED



REGIONAL / REGIONAL

TREAD DESIGNS / DISEÑO DE BANDAS

SA



SA

EJES LIBRES
FREE AXLE

CODE	SIZE MEDIDA	mm		inch	
		mm	inch	mm	inch
75 SA 18	7	194	7 5/8	14.30	18/32
80 SA 18	8	203	8	14.30	18/32
82 SA 18	8.2	210	8 1/4	14.30	18/32
85 SA 18	9	219	8 5/8	14.30	18/32
90 SA 18	10	229	9	14.30	18/32
92 SA 18	10.5	235	9 1/4	14.30	18/32

RADIAL / RADIAL



SA15



SA 15

EJES LIBRES
FREE AXLE

CODE	SIZE MEDIDA	mm		inch	
		mm	inch	mm	inch
80 SA 15	8	203	8	11.90	15/32
85 SA 15	9	219	8 5/8	11.90	15/32
90 SA 15	10	229	9	11.90	15/32
92 SA 15	10.5	235	9 1/4	11.90	15/32



SA1



SA 1

EJES LIBRES
FREE AXLE

CODE	SIZE MEDIDA	mm		inch	
		mm	inch	mm	inch
85 SA1 18	9	219	8 5/8	14.30	18/32
90 SA1 18	10	230	9	14.30	18/32
94 SA1 18	10.5	240	9 3/8	14.30	18/32
97 SA1 18	12	250	9 7/8	14.30	18/32

RADIAL / RADIAL



- ■ ■ RECOMENDADO
- ■ ■ ACEP TIBLE
- ■ ■ LIMITADO

- ■ ■ RECOMMENDED
- ■ ■ ACCEPTABLE
- ■ ■ LIMITED



REGIONAL / REGIONAL

TREAD DESIGNS / DISEÑO DE BANDAS

SAP



SAP		EJES LIBRES Y DE TRACCION FOR DRIVE AXLE APPLICATION				
CODE	SIZE MEDIDA	mm		inch		
		mm	inch	mm	inch	
70 SAP 17.5	6	180	7	14.00	17.5/32	
74 SAP 17.5	6.5	190	7 1/2	14.00	17.5/32	
80 SAP 17.5	8	203	8	14.00	17.5/32	
82 SAP 17.5	8.2	210	8 1/4	14.00	17.5/32	
85 SAP 17.5	9	219	8 5/8	14.00	17.5/32	
90 SAP 17.5	10	229	9	14.00	17.5/32	
94 SAP 17.5	10.5	240	9 1/2	14.00	17.5/32	
97 SAP 17.5	12	250	9 7/8	14.00	17.5/32	
102 SAP 17.5	12.2	260	10 1/4	14.00	17.5/32	

RADIAL / RADIAL DIAGONAL / BIAS PLY



SAM



SAM		EJES LIBRES Y DE TRACCION FOR DRIVE AXLE APPLICATION				
CODE	SIZE MEDIDA	mm		inch		
		mm	inch	mm	inch	
57 SAM 18	3.7	149	5 7/8	14.30	18/32	
62 SAM 18	4.2	159	6 1/4	14.30	18/32	
65 SAM 18	5	168	6 5/8	14.30	18/32	
70 SAM 18	6	180	7	14.30	18/32	
75 SAM 18	7	194	7 5/8	14.30	18/32	
80 SAM 18	8	203	8	14.30	18/32	
82 SAM 18	8.2	210	8 1/4	14.30	18/32	
85 SAM 18	9	219	8 5/8	14.30	18/32	
90 SAM 18	10	229	9	14.30	18/32	
92 SAM 18	10.5	235	9 1/4	14.00	18/32	
94 SAM 18	10.7	241	9 1/2	14.30	18/32	
97 SAM 18	12	250	9 7/8	14.30	18/32	

RADIAL / RADIAL

LW



LW		EJES LIBRES FOR FREE AXLE APPLICATION				
CODE	SIZE MEDIDA	mm		inch		
		mm	inch	mm	inch	
80 LW 22	8	203	8	17.50	22/32	
85 LW 22	9	219	8 5/8	17.50	22/32	
90 LW 22	10	229	9	17.50	22/32	
92 LW 22	10.5	235	9 1/4	17.50	22/32	
97 LW 22	12	250	9 7/8	17.50	22/32	
104 LW 22	12.5	267	10 1/2	17.50	22/32	

RADIAL / RADIAL DIAGONAL / BIAS PLY



- ■ ■ RECOMENDADO
- ■ ■ ACEP TIBLE
- ■ ■ LIMITADO

- ■ ■ RECOMMENDED
- ■ ■ ACCEPTABLE
- ■ ■ LIMITED



REGIONAL / REGIONAL

TREAD DESIGNS / DISEÑO DE BANDAS



MT		EJES DE TRACCION FOR DRIVE AXLE APPLICATION			
CODE	SIZE MEDIDA	mm		inch	
		mm	inch	mm	inch
75 MT 18	7	194	7 5/8	14.30	18/32
80 MT 18	8	203	8	14.30	18/32
85 MT 18	9	219	8 5/8	14.30	18/32
90 MT 18	10	229	9	14.30	18/32

RADIAL / RADIAL



ZEM		EJES LIBRES Y DE TRACCION FOR DRIVE AXLE APPLICATION			
CODE	SIZE MEDIDA	mm		inch	
		mm	inch	mm	inch
70 ZEM 18	6	180	7	14.30	18/32
74 ZEM 18	6.5	190	7 1/2	14.30	18/32

RADIAL / RADIAL DIAGONAL / BIAS PLY



ZEM1		EJES LIBRES Y DE TRACCION FOR DRIVE AXLE APPLICATION			
CODE	SIZE MEDIDA	mm		inch	
		mm	inch	mm	inch
85 ZEM1 20	9	219	8 5/8	16.00	20/32
90 ZEM1 20	10	230	9	16.00	20/32
94 ZEM1 20	10.5	240	9 3/8	16.00	20/32
97 ZEM1 20	12	250	9 7/8	16.00	20/32
102 ZEM1 20	12.2	260	10 1/4	16.00	20/32

RADIAL / RADIAL DIAGONAL / BIAS PLY



- ■ ■ RECOMENDADO
- ■ ACEP TIBLE
- ■ ■ LIMITADO

www.hbplusbandamatic.com

- ■ ■ RECOMMENDED
- ■ ACCEPTABLE
- ■ ■ LIMITED



REGIONAL / REGIONAL

TREAD DESIGNS / DISEÑO DE BANDAS



BMM



BMM		EJES DE TRACCION FOR DRIVE AXLE APPLICATION			
CODE	SIZE MEDIDA	mm		inch	
		mm	inch	mm	inch
70 BMM 18	8	203	8	15.10	19/32
74 BMM 18	9	219	8 5/8	15.10	19/32

RADIAL / RADIAL



DD



DD		EJES DE TRACCION FOR DRIVE AXLE APPLICATION			
CODE	SIZE MEDIDA	mm		inch	
		mm	inch	mm	inch
70 DD 18	6	180	7	14.00	18/32
74 DD 18	6.5	190	7 1/2	14.00	18/32
94 DD 26	10.5	240	9 3/8	21.00	26/32
97 DD 26	12	250	9 7/8	21.00	26/32
102 DD 26	12.2	260	10 1/4	21.00	26/32

RADIAL / RADIAL

M + S



DDL



DDL		EJES DE TRACCION FOR DRIVE AXLE APPLICATION			
CODE	SIZE MEDIDA	mm		inch	
		mm	inch	mm	inch
90 DDL 23	10	230	9	18.00	23/32
94 DDL 23	10.5	240	9 1/2	18.00	23/32
97 DDL 23	12	250	9 7/8	18.00	23/32
102 DDL 23	12.2	260	10 1/4	18.00	23/32
105 DDL 23	12.6	270	10 5/8	18.00	23/32

RADIAL / RADIAL

M + S



- ■ ■ RECOMENDADO
- ■ ■ ACEP TIBLE
- ■ ■ LIMITADO

- ■ ■ RECOMMENDED
- ■ ■ ACCEPTABLE
- ■ ■ LIMITED



REGIONAL / REGIONAL

TREAD DESIGNS / DISEÑO DE BANDAS



M + S

DDM		EJES DE TRACCION FOR DRIVE AXLE APPLICATION			
CODE	SIZE MEDIDA	mm		inch	
		mm	inch	mm	inch
97 DDM 26	12	250	9 7/8	21.00	26/32

RADIAL / RADIAL



DT		EJES DE TRACCION FOR DRIVE AXLE APPLICATION			
CODE	SIZE MEDIDA	mm		inch	
		mm	inch	mm	inch
70 DT 22	6	180	7 5/8	17.50	22/32
74 DT 22	6	190	7 1/2	17.50	22/32

RADIAL / RADIAL



BL		EJES DE TRACCION FOR DRIVE AXLE APPLICATION			
CODE	SIZE MEDIDA	mm		inch	
		mm	inch	mm	inch
85 BL 15	9	220	8 5/8	11.90	15/32
90 BL 15	10	230	9	11.90	15/32
94 BL 15	10.5	240	9 1/2	11.90	15/32
97 BL 15	12	250	9 7/8	11.90	15/32

RADIAL / RADIAL



- ■ ■ ■ RECOMENDADO
- ■ ■ ACEP TIBLE
- ■ LIMITADO

- ■ ■ ■ RECOMMENDED
- ■ ■ ACCEPTABLE
- ■ LIMITED



REGIONAL / REGIONAL

TREAD DESIGNS / DISEÑO DE BANDAS



BLI		EJES DE TRACCIÓN FOR DRIVE AXLE APPLICATION							
CODE	SIZE MEDIDA	mm		inch		mm		inch	
		82 BLI 12	8.2	210	8 1/4	9.00	12/32		



BT		EJES DE TRACCIÓN FOR DRIVE AXLE APPLICATION							
CODE	SIZE MEDIDA	mm		inch		mm		inch	
		80 BT 19	8	203	8	15.10	19/32		
85 BT 19	9	219	8 5/8	15.10	19/32				
90 BT 19	10	229	9	15.10	19/32				

M + S

RADIAL / RADIAL



BT2		EJES DE TRACCIÓN FOR DRIVE AXLE APPLICATION							
CODE	SIZE MEDIDA	mm		inch		mm		inch	
		80 BT2 26	8	203	8	20.60	26/32		
85 BT2 26	9A	219	8 5/8	20.60	26/32				
90 BT2 26	10	229	9	20.60	26/32				

M + S



- ■ ■ ■ RECOMENDADO
- ■ ■ ACEPTABLE
- ■ LIMITADO

- ■ ■ ■ RECOMMENDED
- ■ ■ ACCEPTABLE
- ■ LIMITED



REGIONAL / REGIONAL

TREAD DESIGNS / DISEÑO DE BANDAS

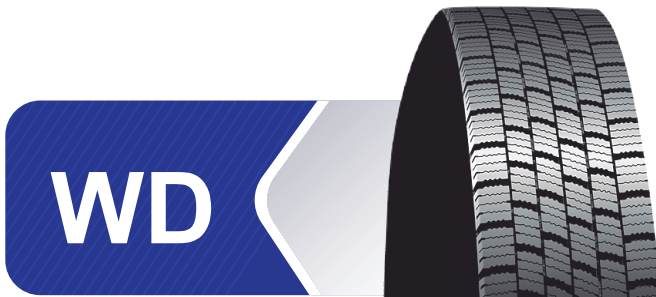


M + S

BNT		EJES DE TRACCION FOR DRIVE AXLE APPLICATION			
CODE	SIZE MEDIDA	mm		inch	
		mm	inch	mm	inch
97 BNT 23	12	250	9 7/8	18.00	23/32
102 BNT 23	12.2	260	10 1/4	18.00	23/32
105 BNT 23	12.6	270	10 5/8	18.00	23/32



RADIAL / RADIAL

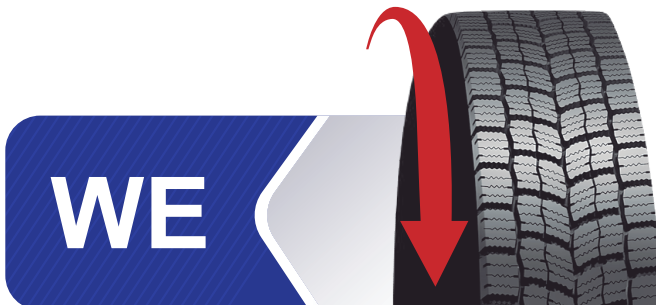


M + S

WD		EJES DE TRACCION FOR DRIVE AXLE APPLICATION			
CODE	SIZE MEDIDA	mm		inch	
		mm	inch	mm	inch
97 WD 24	12	250	9 7/8	19.00	24/32
102 WD 24	12.2	260	10 1/4	19.00	24/32
105 WD 24	12.6	270	10 5/8	19.00	24/32



RADIAL / RADIAL



M + S

WE		EJES DE TRACCION FOR DRIVE AXLE APPLICATION			
CODE	SIZE MEDIDA	mm		inch	
		mm	inch	mm	inch
85 WE 24	9	219	8 5/8	19.00	24/32
90 WE 24	10	229	9	19.00	24/32
97 WE 24	12	250	9 7/8	19.00	24/32
102 WE 24	12.2	260	10 1/4	19.00	24/32
107 WE 24	12.6	275	10 7/8	19.00	24/32



RADIAL / RADIAL

- ■ ■ ■ RECOMENDADO
- ■ ■ ACEP TIBLE
- ■ LIMITADO

www.hbplusbandamatic.com

- ■ ■ ■ RECOMMENDED
- ■ ■ ACCEPTABLE
- ■ LIMITED



REGIONAL / REGIONAL

TREAD DESIGNS / DISEÑO DE BANDAS



GRIP



M + S

GRIP		EJES DE TRACCION FOR DRIVE AXLE APPLICATION			
CODE	SIZE MEDIDA	mm		inch	
		mm	inch	mm	inch
70 GRIP 22	6	178	7	17.50	22/32
75 GRIP 22	7	194	7 5/8	17.50	22/32
80 GRIP 22	8	203	8	17.50	22/32
85 GRIP 22	9	219	8 5/8	17.50	22/32



RADIAL / RADIAL



MTM2



M + S

MTM2		EJES DE TRACCION FOR DRIVE AXLE APPLICATION			
CODE	SIZE MEDIDA	mm		inch	
		mm	inch	mm	inch
80 MTM2 26	8	203	8	20.60	26/32
85 MTM2 26	9	219	8 5/8	20.60	26/32
90 MTM2 26	10	229	9	20.60	26/32
94 MTM2 26	10.5	241	9 1/2	20.60	26/32
97 MTM2 26	12	250	9 7/8	20.60	26/32



RADIAL / RADIAL



MTM3



M + S

MTM3		EJES DE TRACCION FOR DRIVE AXLE APPLICATION			
CODE	SIZE MEDIDA	mm		inch	
		mm	inch	mm	inch
82 MTM3 26	8.2	210	8 1/4	20.60	26/32
85 MTM3 26	9	219	8 5/8	20.60	26/32
90 MTM3 26	10	229	9	20.60	26/32



RADIAL / RADIAL

- ■ ■ ■ RECOMENDADO
- ■ ■ ACEP TIBLE
- ■ LIMITADO

- ■ ■ ■ RECOMMENDED
- ■ ■ ACCEPTABLE
- ■ LIMITED



REGIONAL / REGIONAL

TREAD DESIGNS / DISEÑO DE BANDAS

BMB



M + S

BMB		EJES DE TRACCION FOR DRIVE AXLE APPLICATION			
CODE	SIZE MEDIDA	mm		inch	
		mm	inch	mm	inch
75 BMB 22	6.5	190	7 1/2	17.00	22/32
90 BMB 26	10	230	9	21.00	26/32
94 BMB 26	10.5	240	9 1/2	21.00	26/32
97 BMB 26	12	250	9 7/8	21.00	26/32
102 BMB 26	12.2	260	10 1/4	21.00	26/32



RADIAL / RADIAL

BR



BR		EJES DE TRACCION FOR DRIVE AXLE APPLICATION			
CODE	SIZE MEDIDA	mm		inch	
		mm	inch	mm	inch
64 BR 16	4.5	165	6 1/2	12.70	16/32
70 BR 16	6	178	7	12.70	16/32
76 BR 17	7.5	197	7 3/4	13.50	17/32
80 BR 17	8	203	8	13.50	17/32
92 BR 18	10.5	235	9 1/4	14.30	18/32



RADIAL / RADIAL

BTM2



M + S

BTM2		EJES DE TRACCION FOR DRIVE AXLE APPLICATION			
CODE	SIZE MEDIDA	mm		inch	
		mm	inch	mm	inch
103 BTM2 23	12.3	264	10 3/8	18.50	23/32
107 BTM2 23	12.7	275	10 7/8	18.50	23/32



RADIAL / RADIAL

- ■ ■ ■ RECOMENDADO
- ■ ■ ACEP TIBLE
- ■ LIMITADO

- ■ ■ ■ RECOMMENDED
- ■ ■ ACCEPTABLE
- ■ LIMITED



REGIONAL / REGIONAL

TREAD DESIGNS / DISEÑO DE BANDAS



PR		EJES DE TRACCION FOR DRIVE AXLE APPLICATION			
CODE	SIZE MEDIDA	mm		inch	
		mm	inch	mm	inch
77 PR 26	7.7	200	7 7/8	20.60	26/32
82 PR 26	8.2	210	8 1/4	20.60	26/32
85 PR 26	9	219	8 5/8	20.60	26/32
97 PR 26	12	250	9 7/8	20.60	26/32

RADIAL / RADIAL



AS		EJES DE TRACCION FOR DRIVE AXLE APPLICATION			
CODE	SIZE MEDIDA	mm		inch	
		mm	inch	mm	inch
97 AS 24	12	250	9 7/8	19.00	24/32
102 AS 24	12.2	260	10 1/4	19.00	24/32

RADIAL / RADIAL

M + S



BM		EJES DE TRACCION FOR DRIVE AXLE APPLICATION			
CODE	SIZE MEDIDA	mm		inch	
		mm	inch	mm	inch
102 BM 25	12.2	260	10 1/4	20.00	25/32
105 BM 25	12.6	270	10 5/8	20.00	25/32



3PMSF



- ■ ■ ■ RECOMENDADO
- ■ ■ ACEPTABLE
- ■ LIMITADO

- ■ ■ ■ RECOMMENDED
- ■ ■ ACCEPTABLE
- ■ LIMITED



METRO CITY / URBANO

TREAD DESIGNS / DISEÑO DE BANDAS



DL1		EJES DE TRACCION FOR DRIVE AXLE APPLICATION			
CODE	SIZE MEDIDA	mm		inch	
		mm	inch	mm	inch
64 DL1 21	4.5	165	6 1/2	17.00	21/32
67 DL1 21	5.5	175	6 7/8	17.00	21/32
72 DL1 21	6.3	185	7 1/4	17.00	21/32

RADIAL / RADIAL



S		EJES LIBRES Y DE TRACCION FOR DRIVE AXLE APPLICATION			
CODE	SIZE MEDIDA	mm		inch	
		mm	inch	mm	inch
54 S 14	2.5	138	5 1/2	11.10	14/32
56 S 14	3.5	146	5 3/4	11.10	14/32
75 S 15	7	194	7 5/8	11.90	15/32
80 S 15	8	203	8	11.90	15/32
85 S 15	9	219	8 5/8	11.90	15/32

RADIAL / RADIAL DIAGONAL / BIAS PLY



BMB		EJES LIBRES Y DE TRACCION FOR DRIVE AXLE APPLICATION			
CODE	SIZE MEDIDA	mm		inch	
		mm	inch	mm	inch
97 BUB 22	12	250	9 7/8	17.5	22/32
94 BUB 26	10.5	240	9 1/2	20.5	26/32

RADIAL / RADIAL



- ■ ■ RECOMENDADO
- ■ ■ ACEPTABLE
- ■ ■ LIMITADO

- ■ ■ RECOMMENDED
- ■ ■ ACCEPTABLE
- ■ ■ LIMITED



METRO CITY / URBANO

TREAD DESIGNS / DISEÑO DE BANDAS



GC



GC		EJES LIBRES Y DE TRACCION FOR DRIVE AXLE APLICATION			
CODE	SIZE MEDIDA	mm		inch	
		mm	inch	mm	inch
60 GC 14	4	152	6	11.10	14/32

RADIAL / RADIAL DIAGONAL / BIAS PLY



WHR



WHR		EJES LIBRES Y DE TRACCION FOR DRIVE AXLE APLICATION			
CODE	SIZE MEDIDA	mm		inch	
		mm	inch	mm	inch
75 WHR 24	7	194	7 5/8	19.00	24/32
80 WHR 24	8	203	8	19.00	24/32
85 WHR 24	9	219	8 5/8	19.00	24/32
92 WHR 24	10.5	235	9 1/4	19.00	24/32
97 WHR 24	12	250	9 7/8	19.00	24/32
103 WHR 24	14	263	10 3/8	19.00	24/32

RADIAL / RADIAL



CR



CR		EJES LIBRES Y DE TRACCION FOR DRIVE AXLE APLICATION			
CODE	SIZE MEDIDA	mm		inch	
		mm	inch	mm	inch
80 CR 18	8	203	8	14.30	18/32
92 CR 18	10.5	235	9 1/4	14.30	18/32
100 CR 18	12	254	10	14.30	18/32
104 CR 18	12.5	267	10 1/2	14.30	18/32

RADIAL / RADIAL



- ■ ■ RECOMENDADO
- ■ ■ ACEP TIBLE
- ■ ■ LIMITADO

- ■ ■ RECOMMENDED
- ■ ■ ACCEPTABLE
- ■ ■ LIMITED



METRO CITY / URBANO

TREAD DESIGNS / DISEÑO DE BANDAS

M + S



B43		EJES DE TRACCION FOR DRIVE AXLE APPLICATION			
CODE	SIZE MEDIDA	mm		inch	
		mm	inch	mm	inch
90 B43 20	9	230	9	17.00	20/32
94 B43 20	10	240	9 1/2	17.00	20/32

RADIAL / RADIAL



BAR		EJES DE TRACCION FOR DRIVE AXLE APPLICATION			
CODE	SIZE MEDIDA	mm		inch	
		mm	inch	mm	inch
55 BAR 12	3	143	5 5/8	9.50	12/32
61 BAR 12	4	156	6 1/8	9.50	12/32
64 BAR 12	4.5	165	6 1/2	9.50	12/32

RADIAL / RADIAL



UM		EJES DE TRACCION FOR DRIVE AXLE APPLICATION			
CODE	SIZE MEDIDA	mm		inch	
		mm	inch	mm	inch
70 UM 16	6	178	7	13.00	16/32
74 UM 16	6.2	190	7 1/2	13.00	16/32
80 UM 18	8	203	8	17.00	18/32
97 UM 19	12	250	9 7/8	15.10	19/32
85 UM 23	19	219	8 5/8	18.00	23/32
90 UM 23	10	230	9	18.00	23/32
94 UM 23	10	240	9 1/2	18.00	23/32
97 UM 23	12	250	9 7/8	18.00	23/32
102UM 23	12.2	260	10 1/4	18.00	23/32

RADIAL / RADIAL



- ■ ■ ■ RECOMENDADO
- ■ ■ ACEP TIBLE
- ■ LIMITADO

- ■ ■ ■ RECOMMENDED
- ■ ■ ACCEPTABLE
- ■ LIMITED



METRO CITY / URBANO

TREAD DESIGNS / DISEÑO DE BANDAS



UHS		EJES DE TRACCION FOR DRIVE AXLE APPLICATION			
CODE	SIZE MEDIDA	mm		inch	
		mm	inch	mm	inch
70 UHS 16	6	180	7	13.00	16/32
74 UHS 16	6.5	190	7 1/2	13.00	16/32

RADIAL / RADIAL



WT		EJES DE TRACCION FOR DRIVE AXLE APPLICATION			
CODE	SIZE MEDIDA	mm		inch	
		mm	inch	mm	inch
80 WT 26	8	203	8	20.60	26/32
85 WT 26	9	219	8 5/8	20.60	26/32

RADIAL / RADIAL

M + S



WM		EJES DE TRACCION FOR DRIVE AXLE APPLICATION			
CODE	SIZE MEDIDA	mm		inch	
		mm	inch	mm	inch
82 WM 26	8.2	210	8 1/4	20.50	26/32
85 WM 26	9	219	8 5/8	20.50	26/32
90 WM 26	10	230	9	20.50	26/32
94 WM 26	10.5	241	9 1/2	20.50	26/32
97 WM 26	12	250	9 7/8	20.50	26/32
102 WM 26	12	260	10 1/4	20.50	26/32
105 WM 26	12.6	270	10 5/8	20.50	26/32

RADIAL / RADIAL



- ▪ ▪ ▪ RECOMENDADO
- ▪ ▪ ACEP TIBLE
- ▪ LIMITADO

- ▪ ▪ ▪ RECOMMENDED
- ▪ ▪ ACCEPTABLE
- ▪ LIMITED



METRO CITY / URBANO

TREAD DESIGNS / DISEÑO DE BANDAS



ZY2



ZY2		EJES DE TRACCION FOR DRIVE AXLE APPLICATION			
CODE	SIZE MEDIDA	mm		inch	
		mm	inch	mm	inch
85 ZY2 22	9	219	8 5/8	17.50	22/32
90 ZY2 22	10	229	9	17.50	22/32
94 ZY2 22	10.5	240	9 1/2	17.50	22/32
97 ZY2 22	12	250	9 7/8	17.50	22/32
102 ZY2 22	12.2	260	10 1/4	17.50	22/32

RADIAL / RADIAL



ZY2M



ZY2M		EJES DE TRACCION FOR DRIVE AXLE APPLICATION			
CODE	SIZE MEDIDA	mm		inch	
		mm	inch	mm	inch
90 ZY2M 23	10	230	9	18.00	23/32
94 ZY2M 23	10.5	240	9 3/4	18.00	23/32
97 ZY2M 23	12	250	9 7/8	18.00	23/32

RADIAL / RADIAL



- ■ ■ ■ RECOMENDADO
- ■ ■ ACEP TABLE
- ■ LIMITADO

- ■ ■ ■ RECOMMENDED
- ■ ■ ACCEPTABLE
- ■ LIMITED



METRO CITY / URBANO

TREAD DESIGNS / DISEÑO DE BANDAS



WW		EJES DE TRACCION FOR DRIVE AXLE APPLICATION			
CODE	SIZE MEDIDA	mm		inch	
		mm	inch	mm	inch
130 WW 18	15	330	13	14.30	18/32
142 WW 21	16.2	362	14 1/4	16.70	21/32

RADIAL / RADIAL



LPD		EJES DE TRACCION FOR DRIVE AXLE APPLICATION			
CODE	SIZE MEDIDA	mm		inch	
		mm	inch	mm	inch
97 LPD 21	12	250	9 7/8	17.00	21/32
102 LPD 21	12.2	260	10 1/4	17.00	21/32
105 LPD 21	12.6	270	10 5/8	17.00	21/32

RADIAL / RADIAL

M + S



- ■ ■ RECOMENDADO
- ■ ■ ACEP TIBLE
- ■ ■ LIMITADO

- ■ ■ RECOMMENDED
- ■ ■ ACCEPTABLE
- ■ ■ LIMITED



ON / OFF ROAD / MIXTO

TREAD DESIGNS / DISEÑO DE BANDAS

M + S



DY		EJES DE TRACCION FOR DRIVE AXLE APPLICATION			
CODE	SIZE MEDIDA	mm		inch	
		mm	inch	mm	inch
90 DY 21	10	230	9	17.00	21/32
94 DY 21	10.5	240	9 1/2	17.00	21/32
85 DY 23	9	219	8 5/8	18.00	23/32
97 DY 26	12	250	9 7/8	21.00	26/32



RADIAL / RADIAL



TC		EJES DE TRACCION FOR DRIVE AXLE APPLICATION			
CODE	SIZE MEDIDA	mm		inch	
		mm	inch	mm	inch
52 TC 14	2	133	5 1/4	11.10	14/32
54 TC 14	2.5	140	5 1/2	11.10	14/32
56 TC 14	3	146	5 3/4	11.10	14/32
60 TC 14	4	152	6	11.10	14/32
65 TC 15	5	168	6 5/8	11.90	15/32
70 TC 15	6	179	7	11.90	15/32
75 TC 20	7	194	7 5/8	15.90	20/32
80 TC 20	8	203	8	15.90	20/32
85 TC 20	9	219	8 5/8	15.90	20/32



RADIAL / RADIAL DIAGONAL / BIAS PLY



M + S

LT		MULTITRACCION MULTITRACCION			
CODE	SIZE MEDIDA	mm		inch	
		mm	inch	mm	inch
80 LT 15	8	203	8	11.90	15/32
84 LT 15	8.2	216	8 1/2	11.90	15/32



- ■ ■ ■ RECOMENDADO
- ■ ■ ■ ACEPTABLE
- ■ ■ ■ LIMITADO

www.hbplusbandamatic.com

- ■ ■ ■ RECOMMENDED
- ■ ■ ■ ACCEPTABLE
- ■ ■ ■ LIMITED



ON / OFF ROAD / MIXTO

TREAD DESIGNS / DISEÑO DE BANDAS



CROSS		EJES DE TRACCION FOR DRIVE AXLE APPLICATION			
CODE	SIZE MEDIDA	mm inch		mm inch	
55 CROSS 15	3	143	5 5/8	11.90	15/32
60 CROSS 15	4	152	6	11.90	15/32
65 CROSS 15	5	168	6 5/8	11.90	15/32
70 CROSS 20	6	178	7	16.00	20/32
75 CROSS 20	7	194	7 5/8	16.00	20/32
85 CROSS 20	9	219	8 5/8	16.00	20/32

RADIAL / RADIAL DIAGONAL / BIAS PLY



CROSS 1		EJES DE TRACCION FOR DRIVE AXLE APPLICATION			
CODE	SIZE MEDIDA	mm inch		mm inch	
60 CROSS1 20	4	152	6	16.00	20/32
65 CROSS1 20	5	168	6 5/8	16.00	20/32
80 CROSS1 20	8	203	8	16.00	20/32

RADIAL / RADIAL DIAGONAL / BIAS PLY



AT		EJES DE TRACCION FOR DRIVE AXLE APPLICATION			
CODE	SIZE MEDIDA	mm inch		mm inch	
82 AT 28	8.2	210	8 1/4	22.00	28/32
85 AT 28	9	219	8 5/8	22.00	28/32
90 AT 28	10	230	9	22.00	28/32
94 AT 28	10.5	240	9 1/2	22.00	28/32
97 AT 28	12	250	9 7/8	22.00	28/32
102 AT 28	12.2	260	10 1/4	22.00	28/32

RADIAL / RADIAL

M + S

- ■ ■ RECOMENDADO
- ■ ■ ACEPTABLE
- ■ ■ LIMITADO

- ■ ■ RECOMMENDED
- ■ ■ ACCEPTABLE
- ■ ■ LIMITED



ON / OFF ROAD / MIXTO

TREAD DESIGNS / DISEÑO DE BANDAS



M + S

ATL		EJES DE TRACCIÓN FOR DRIVE AXLE APPLICATION			
CODE	SIZE MEDIDA	mm		inch	
		mm	inch	mm	inch
82 ATL 22	8.2	210	8 1/4	17.50	22/32
85 ATL 22	9	220	8 5/8	17.50	22/32
90 ATL 22	10	230	9	17.50	22/32
94 ATL 22	10.5	240	9 3/8	17.50	22/32
97 ATL 22	12	250	9 7/8	17.50	22/32
102 ATL 22	12.2	260	10 1/4	17.50	22/32

RADIAL / RADIAL



M + S

LL		EJES DE TRACCIÓN FOR DRIVE AXLE APPLICATION			
CODE	SIZE MEDIDA	mm		inch	
		mm	inch	mm	inch
70 LL 20	6	178	7	16.00	20/32
74 LL 20	6.5	190	7 1/2	16.00	20/32
75 LL 24	7	194	7 5/8	19.00	24/32
80 LL 24	8	203	8	19.00	24/32
85 LL 24	9	219	8 5/8	19.00	24/32
95 LL 24	11	244	9 5/8	19.00	24/32

RADIAL / RADIAL DIAGONAL / BIAS PLY



M + S

MLZ		EJES DE TRACCIÓN FOR DRIVE AXLE APPLICATION			
CODE	SIZE MEDIDA	mm		inch	
		mm	inch	mm	inch
90 MLZ 23	10	230	9	18.00	23/32
94 MLZ 23	10.5	240	9 1/2	18.00	23/32
97 MLZ 23	12	250	9 7/8	18.00	23/32
85 MLZ 29	9	219	8 5/8	23.00	29/32

RADIAL / RADIAL DIAGONAL / BIAS PLY



- ■ ■ ■ RECOMENDADO
- ■ ■ ACEP TIBLE
- ■ LIMITADO

- ■ ■ ■ RECOMMENDED
- ■ ■ ACCEPTABLE
- ■ LIMITED



ON / OFF ROAD / MIXTO

TREAD DESIGNS / DISEÑO DE BANDAS



WH



M + S

CODE	SIZE MEDIDA	EJES DE TRACCION FOR DRIVE AXLE APPLICATION			
		mm		inch	
80 WH 26	8	203	8	20.60	26/32
84 WH 26	8.5	216	8 1/2	20.60	26/32
90 WH 26	10	229	9	20.60	26/32
94 WH 26	10.5	241	9 1/2	20.60	26/32
97 WH 26	12	250	9 7/8	20.60	26/32
105 WH 26	12.5	267	10 5/8	20.60	26/32



RADIAL / RADIAL DIAGONAL / BIAS PLY



WB



CODE	SIZE MEDIDA	EJES DE TRACCION FOR DRIVE AXLE APPLICATION			
		mm		inch	
127 WB 21	14.5	327	12 7/8	16.70	21/32



RADIAL / RADIAL



DL



M + S

CODE	SIZE MEDIDA	EJES DE TRACCION FOR DRIVE AXLE APPLICATION			
		mm		inch	
75 DL 22	7	194	7 5/8	17.50	22/32
80 DL 22	8	203	8	17.50	22/32
82 DL 22	8.2	210	8 1/4	17.50	22/32
85 DL 22	9	219	8 5/8	17.50	22/32
90 DL 22	10	229	9	17.50	22/32



RADIAL / RADIAL

- ■ ■ ■ RECOMENDADO
- ■ ■ ACEP TIBLE
- ■ ■ LIMITADO

- ■ ■ ■ RECOMMENDED
- ■ ■ ACCEPTABLE
- ■ ■ LIMITED



OFF ROAD / FUERA DE CARRETERA

TREAD DESIGNS / DISEÑO DE BANDAS

BGW



M + S

BGW		EJES DE TRACCION FOR DRIVE AXLE APPLICATION			
CODE	SIZE MEDIDA	mm		inch	
		142 BGW 32	16.2	360	14 1/4

RADIAL / RADIAL DIAGONAL / BIAS PLY



WBL



M + S

WBL		EJES DE TRACCION FOR DRIVE AXLE APPLICATION			
CODE	SIZE MEDIDA	mm		inch	
		142 WBL 24	16.2	362	14 1/4

RADIAL / RADIAL



ML



M + S

ML		EJES DE TRACCION FOR DRIVE AXLE APPLICATION			
CODE	SIZE MEDIDA	mm		inch	
		85 ML 22	9	219	8 5/8
80 ML 28	8	203	8	22.20	28/32
85 ML 28	9	219	8 5/8	22.20	28/32
92 ML 28	10.5	235	8 1/4	22.20	28/32
97 ML 28	12	250	9 7/8	22.20	28/32

RADIAL / RADIAL DIAGONAL / BIAS PLY



- ■ ■ ■ RECOMENDADO
- ■ ■ ■ ACEPTABLE
- ■ ■ ■ LIMITADO

- ■ ■ ■ RECOMMENDED
- ■ ■ ■ ACCEPTABLE
- ■ ■ ■ LIMITED



OFF ROAD / FUERA DE CARRETERA

TREAD DESIGNS / DISEÑO DE BANDAS



SM



SM		EJES DE TRACCION FOR DRIVE AXLE APPLICATION							
CODE	SIZE MEDIDA	mm		inch		mm		inch	
		70 SM 22	6	180	7	17.00	22/32		
74 SM 22	6.5	190	7 1/2	17.00	22/32				
85 SM 27	9	219	8 1/2	21.00	27/32				
90 SM 27	10	230	9	21.00	27/32				
94 SM 27	10.5	240	9 1/2	21.00	27/32				
97 SM 27	12	250	9 7/8	21.00	27/32				
107 SM 32	12.7	276	10 7/8	25.40	32/32				

M + S



RADIAL / RADIAL



LL1



LL1		EJES DE TRACCION FOR DRIVE AXLE APPLICATION							
CODE	SIZE MEDIDA	mm		inch		mm		inch	
		84 LL1 32	8.5	217	8 1/2	25.00	32/32		

M + S



RADIAL / RADIAL DIAGONAL / BIAS PLY



BCT



BCT		EJES LIBRES Y DE TRACCION FOR DRIVE AXLE APPLICATION							
CODE	SIZE MEDIDA	mm		inch		mm		inch	
		100 BCT 26	12	254	10	20.60	26/32		
113 BCT 26	13.6	289	11 3/8	20.60	26/32				

M + S



RADIAL / RADIAL DIAGONAL / BIAS PLY

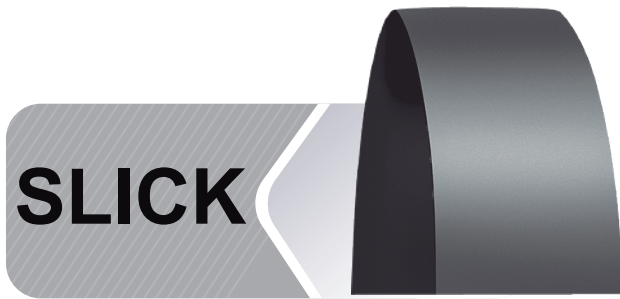
- ■ ■ RECOMENDADO
- ■ ■ ACEP TIBLE
- ■ ■ LIMITADO

- ■ ■ RECOMMENDED
- ■ ■ ACCEPTABLE
- ■ ■ LIMITED



INDUSTRIAL / INDUSTRIAL

TREAD DESIGNS / DISEÑO DE BANDAS



SLICK		INDUSTRIAL INDUSTRIAL			
CODE	SIZE MEDIDA	mm		inch	
		130 SLICK 14	15	330	13
80 SLICK 18	8	203	8	14.30	18/32

MONTACARGA / FORKLIFT



S72		INDUSTRIAL INDUSTRIAL			
CODE	SIZE MEDIDA	mm		inch	
		104 S7237	12.5	266	10 1/2



KAJ7		INDUSTRIAL INDUSTRIAL			
CODE	SIZE MEDIDA	mm		inch	
		95 KAJ71 29	10	245	9 5/8
105 KAJ71 29	12.5	269	10 5/8	23.00	29/32

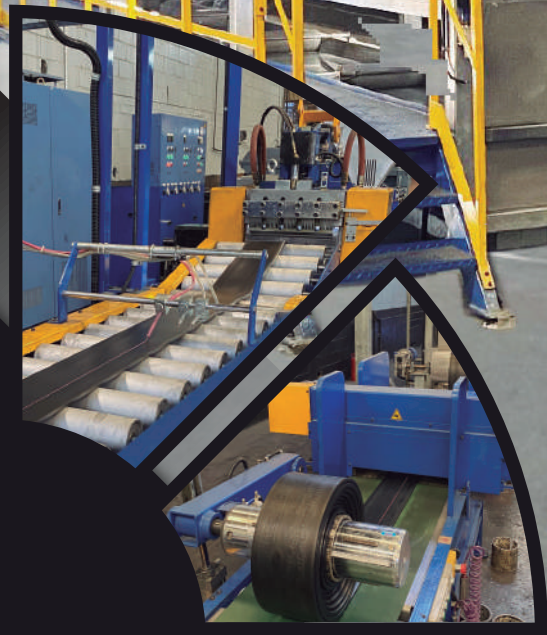


- ■ ■ RECOMENDADO
- ■ ■ ACEP TIBLE
- ■ ■ LIMITADO

www.hbplusbandamatic.com

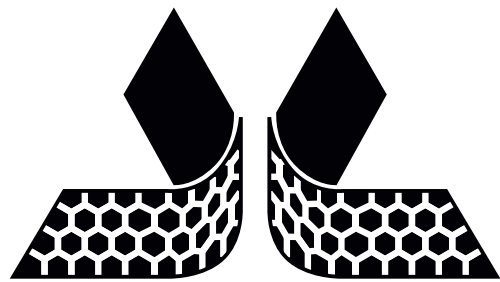
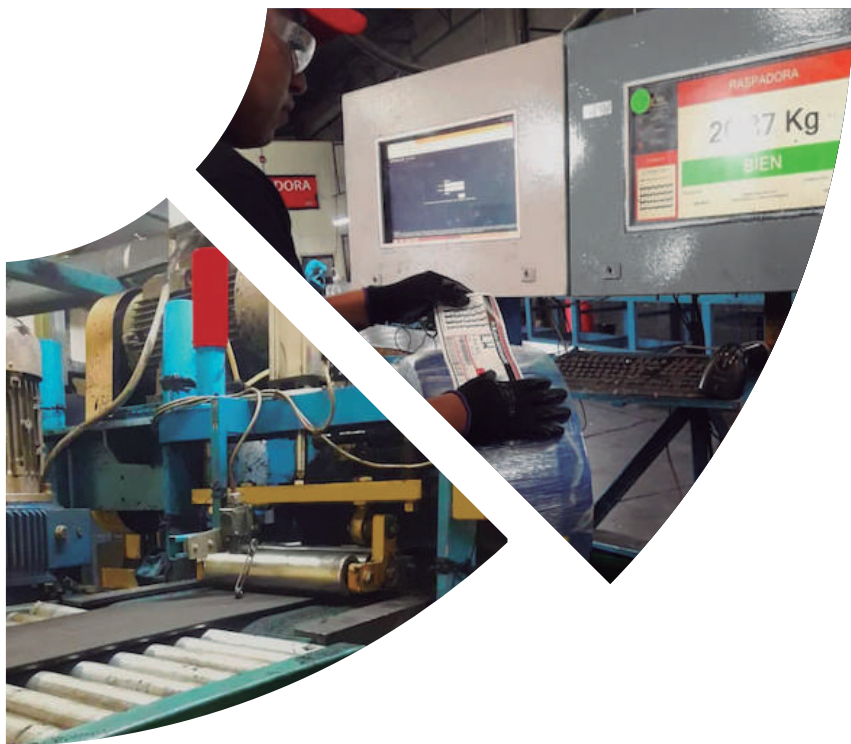
- ■ ■ RECOMMENDED
- ■ ■ ACCEPTABLE
- ■ ■ LIMITED

H. B. **PLUS** BANDAMATIC



H.B. **plus** BANDAMATIC

www.hbplusbandamatic.com



H.B. plus BANDAMATIC
R E T R E A D R U B B E R

TECHNOLOGY ROLLING AROUND THE WORLD.
TECNOLOGÍA QUE RUEDA POR EL MUNDO.

H.B.PLUS BANDAMATIC

TIRA - AZ A-Z STRIP



PRESENTATION PRESENTACIÓN

PACKAGED IN STRIP FORM AND
MANUFACTURED FOR EASY APPLICATION

PRESENTADO EN FORMA DE TIRA Y SE APLICA TRAVEZ DE UNA EXTRUSIÓN

ADHESION ADHERENCIA

GUARANTEES EXCELLENT ADHESION.
GARANTIZA LA ADHERENCIA BUSCADA.

CERTIFICATES / CERTIFICADOS

Tecnología que rueda por el mundo.
Technology rolling over the world.

MX18.00188
Folio 26560

BUREAU VERITAS
Certification



Hules Banda, S.A. de C.V.
Av. de la Luz No. 80, Col. Parque Industrial La Luz, C.P. 54716,
Cuautitlán Izcalli, Estado De México.

Este es un Certificado Multi-sitios, los detalles de los sitios adicionales están listados en la siguiente página(s).

BVQI Mexicana, S.A. de C.V. certifica que el Sistema de Gestión de la Organización mencionada ha sido auditado y se encuentra en conformidad con los requisitos de la Norma de Sistema de Gestión que a continuación se indica

Norma

NMX-CC-9001-IMNC-2015/ISO 9001: 2015

Alcance de Certificación

Desarrollo, manufactura y entrega de productos para el renovado de llantas y compuestos especiales de hule.

Fecha de Inicio del Ciclo Original de Certificación: **17 de Diciembre, 2018**
Fecha de Vencimiento del Ciclo Anterior: **NA**
Fecha de la Auditoría de Certificación/Recertificación: **NA**
Fecha de Inicio del Ciclo de Certificación/ Recertificación: **17 de diciembre, 2018**

Sujeto a la continua operación satisfactoria del Sistema de Gestión de la Organización, este certificado es válido hasta: **16 de diciembre, 2021.**

No. de Certificado: **MX18.00188** Versión: **1** Fecha de Revisión: **17 de diciembre, 2018**



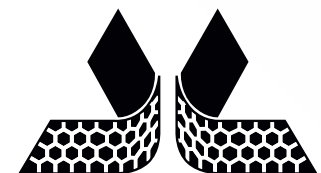
ORGANISMO DE CERTIFICACIÓN
ACREDITADO 21/11

Oficina Local:
**BVQI Mexicana, S.A. de C.V. - Blvd. Manuel Ávila Camacho No. 36,
Piso 11 Col. Lomas de Chapultepec III Sección, Del. Miguel Hidalgo,
C.P. 11000 Ciudad de México**


Cualquier aclaración con respecto al alcance de este certificado y la aplicación de los requisitos del Sistema de Gestión puede ser proporcionada por la Organización. Para verificar la veracidad y validez de este Certificado, favor de enviar su Solicitud de Consulta al siguiente correo electrónico: validacion.documentos@mx.bureauveritas.com, incluir copia escaneada legible.

Este Certificado es Propiedad de BVQI Mexicana S.A. de C.V.


CER-MX-FO-27 Rev. 3 Página 1 de 2 5 de Septiembre, 2018



H.B. plus BANDAMATIC
RETREAD RUBBER





H.B.plus BANDAMATIC



OTR

COMPOUND	ACC-3006	GCR-687	OTR-684	OTR-680	OTR-670	OTR-667	OTR-637	GRADER T	SIDE WALL	SHOULDER
POLYMER CONTENT										
Natural	100	80	100	90	50	100	70	10	50	100
Synthetic	0	20	0	10	50	0	30	90	50	0
PHYSICAL PROPERTIES										
Tensile Psi	3200	2900	2800	2600	2500	2900	2800	1900	2000	2500
Modulus 300% Psi	1700	1200	1100	1500	1100	1100	1100	1100	400	900
Elongation %	500	550	550	400	500	500	500	400	550	550
Hardness Shore A	66	67	64	80	70	66	66	62	54	62
Specific Gravity	1.15	1.15	1.14	1.16	1.15	1.13	1.14	1.15	1.08	1.14
Min. Tc90 @ 280°F	40	40	40	40	40	40	40	26	32	40
MAIN FEATURES										
Cut Chipping Resistance	Excellent	High	Excellent	Excellent	Good	Excellent	High	Good		
Aging Resistance	High	High	High	High	High	High	High	High	High	High
Green Tack	High	Good	High	High	Good	High	Good	Good	Good	Excellent
FOUR										
Slab	✓	✓	✓	✓	✓	✓	✓	✓	Roll	Roll
Strip	✓	✓	✓	✓	✓	✓	✓	✓		
Lug	✓	✓	✓	✓	✓	✓	✓	✓		
MAIN USE										
Sculpture	✓	✓	✓	✓	✓	✓	✓	✓		
Open Steam	✓	✓	✓	✓	✓	✓	✓	✓		
Mold	✓	✓	✓	✓	✓	✓	✓	✓		
TIRE APPLICATIONS										
Loader	✓	✓	✓	✓	✓	✓	✓	✓		
Haul	✓	✓	✓	✓	✓	✓	✓	✓		
Underground Mine	✓	✓	✓	✓	✓	✓	✓	✓		
Grader	✓	✓	✓	✓	✓	✓	✓	✓		

SPECIALLY DESIGNED OTR COMPOUNDS WITH AN OUTSTANDING PERFORMANCE UNDER THE MOST SEVERE TERRAIN CONDITIONS

Phone. (281)821-9719
Fax. (281)821-1027
Toll Free USA 1-866-704-8537

www.hbplusbandamatic.com



HULE COJÍN

CUSHION

**SHELF LIFE
6 MONTHS**

**TIEMPO DE
CADUCIDAD
6 MESES**

PROPERTIES

- Excellent adhesion
- Custom sizes to fit customer requirements
- Tear-resistant properties
- 6 months shelf life
- Works at different curing temperatures
- Manufactured for easy application
- Excellent storing capabilities

PROPIEDADES

- EXCELENTE adhesión en VERDE
- Dimensión de ANCHOS ajustable a requerimiento del cliente.
- Excelentes propiedades de tensión y resistencia al desgarre.
- 6 meses de caducidad a partir de la fecha de fabricación.
- Capacidad de TRABAJAR a diferentes temperaturas de vulcanización.
Elaborado para una aplicación fácil
Excelente estabilidad de almacenado

* READ STORING REQUIREMENTS SIN PACKAGING BOX
* REVISAR CONDICIONES DE ALMACENAJE EN LA CAJA

H. B. PLUS BANDAMATIC

AV. de la Luz N° 80 Parque Industrial la Luz,
Cuautitlán Izcalli Edo. De México. C.P. 54716
Dirección Comercial México
+(52) 58 72 06 38 – 46282800
Dirección Comercial Centro América
+ (52) 58 72 06 38 – 46282800 Ext.4000
E-mail: servicioalcliente@hulesbanda.com.mx
Cel. + 52 1 (55) 22 71 09 81
Estados Unidos / United States, Canada.
Phone +(281) 821- 9719
E-mail: hq@hbplusbandamatic.com
Sur America / South America.
Cel. + 57 313 644 1655
ferbutadieno@gmail.com
México / Central América.
+ (52) 58 72 06 38

direccion@hbplusbandamatic.com

HB PLUS BANDAMATIC EUROPE, S.L,
Calle Esperanza 2 Bajos
Premia de Mar Barcelona, España 08550
Ph. +34 935 76 82 08
Email: custserv@hbplusbandamaticeuro.com

In Russia:
ООО "САМ-МБ"
Московская обл. г. Балашиха,
шоссе Энтузиастов, 84
+74957877744
<https://sa.ru>
<https://koleso.ru/>
Info@sa.ru



www.hbplusbandamatic.com